

MARIE MARTIN

- COLOURING THE CURIOUS -





INDEX

Page 8 **MARIE MARTIN**
About the brand Marie Martin.

Page 10 **10 COMMANDMENTS**
If you don't like rules, don't read this and just do your own thing.

Page 12 **STATEMENT CHANDELIERS**
From classic chandeliers to glamorous centrepieces, a twinkling feature light acts as a room's focal point.



Page 24 **EXTRAORDINARY TABLE LAMPS**
Enhance your space with additions from our range of special and extraordinary table lamps.

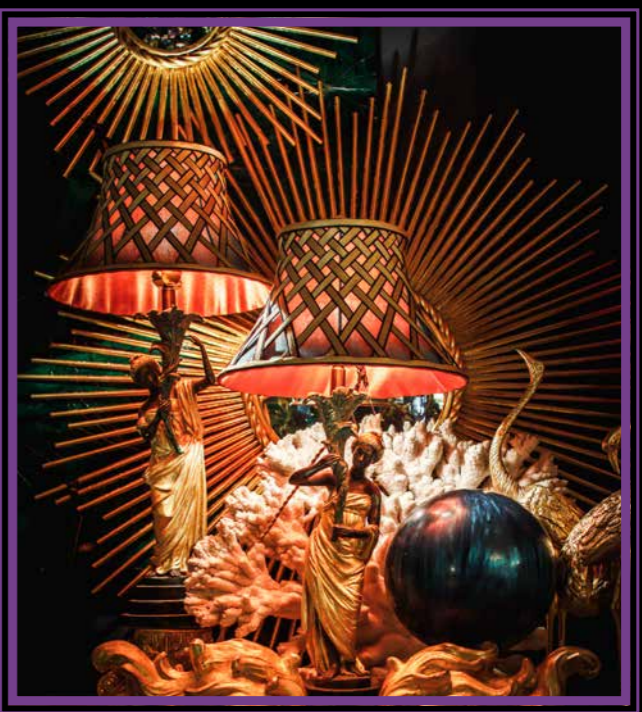
Page 58 **LUXURY FLOOR LIGHTING**
Embrace luxury floor lighting to introduce style, stature and illumination. To make your own Hollywood regency style.

Page 68 **ELEGANT WALL LIGHTS**
The saving grace of small spaces, wall lights are the most sophisticated lights in a room.

Page 80 **HANDMADE DUTCH FURNITURE**
Handmade by Dutch artisans and inspired by the classic Paris 'burlesque' style.



Page 94 **LUXURY HOME ACCENTS & ACCESSORIES**
Décor is the jewellery of your home, dress your space.



Page 112 **ANTIQUE**
Never forget to put an antique piece in your surrounding. It has withstood the time so it has to be beautiful.

Page 114 **CREATE YOUR OWN SHADE**
Customize your own shade according to your very own wishes.

Page 116 **HAUTE COUTURE BEDS**
Marie Martin introduces something really spectacular: a new collection "Haute Couture beds" !

Page 120 **CONTACT**





MARIE MARTIN

Stemming from a passion for virtually everything having to do with the world of interiors, this collection arose from the desire to unite the love for antiques, for Paris, for colour and fully decorated spaces. Abundant attention to detail, lush materials such as bronze, silk, velvet, brocade and crystal as well as clashing colour schemes construct an extravagant universe where happiness is key. With an adventurous mind, free and without reservation, we aim to make any interior, your world, a better and cheerful place. By not shying away from bold and unconventional choices, this collection appeals to the brave and light-hearted, rather than the faint-hearted. An outburst of prints, colours, gold and accessories embody a revival of the French boudoir, exuding a vibrant extravaganza. This fearlessly authentic style drenched with positivity and frivolity dares one to be different, to be classy yet sassy.

Marie Martin is a collaboration between Marielle de Graaf-Blok and Martin de Boer, two interior designers with an unbridled enthusiasm for antiques, artistic skill and decoration galore. The finest antique pieces are searched for, found and restored, often re-gilded or patinated. Beautifully shaped ornaments are being turned into the most elegant lamps. In our point of view, our collection, and any interior for that matter, is only fully completed when a perfect mix and match is established. Coordinating colour pallets, not simply placing objects but truly synchronizing all objects in an enchanting, startling composition.

It would therefore be our ultimate dream to furnish a hotel from top to bottom in Marie Martin style, with a classic heart and fearless soul in perfect sync.



10 COMMANDMENTS

1) Each space should have at least one antique piece

We love truly beautiful items, antique pieces that stood the test of time, having a history of their own. Offering the great opportunity to leave your personal touch, the unique and original past of these pieces add character to your interior.

2) Apply at least 3 beautiful and contemporary colours

Colour embodies liveliness, it provides an identity, brings warmth and is never boring. The reinforcing mixture of antique and vintage pieces with fresh colours ensures a bold and exciting mix.

3) Splurge on gold

Luxury without gold is absolutely unthinkable. With its glamour and radiance it is no wonder gold is considered the richest metal since time immemorial. Our craving for gold knows no boundaries which blatantly shows through our collection.

4) A mix of styles is key

Cut that red thread and stir things up by mixing different styles, creating an interesting, personal style. Vintage combined with baroque, atypical yet complementary, makes for an intriguing and pleasant tension.

5) Add a leopard print for a bit of extravaganza

Animal prints are often associated with luxury and decadency. Our all-time favorite leopard print is an ideal tool in creating a big and bold statement.

6) Do not take things too seriously

Perfection is not interesting. Rather than impeccably matching everything, just improvise and endeavor. A variety of prints and colours, fabrics and wallpapers add up to a splash of joyful uniqueness.

7) Always bear in mind: “Less is Bore”

A fully decorated interior suggests richness. Walking through feels like a journey with new things to discover in every corner. Channel your inner explorer by creating a distinctive, extravagant and playful world of wonder.

8) Add cosiness with soft furnishings

Fabric such as our favourite velvet is rich, soft and oozes comfort. Cushions serve as an ideal tool for an easy update of the look of any interior. Poufs, both practical and elegant, complement your living space with a touch of luxury. Yet, possibly the most defining amongst the furnishings are curtains. Cosy and mood-enhancing these have the great capacity to create a warm intimacy.

9) Let there be fringes everywhere

On shades. On curtains. On cushions. Fringes make everything even prettier and undoubtedly more cheerful. The embellishment generates a rich look showing a keen eye for detail. Even such small refinement can create a complete new look.

10) Never leave your walls “undressed”

The aesthetic excellence, feel of luxury and vividness that can be achieved with wallpaper is inimitable. Antique boiserie and carved panelling as well as fabric upholstered walls paired with space enlarging mirrors whisper the grandeur of castle life.



CHAPTER CHANDELIERS

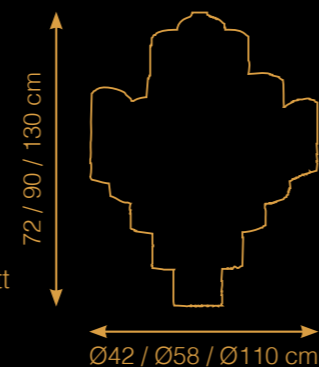
From classic chandeliers to glamorous centrepieces, a twinkling feature light acts as a room's focal point. Chandeliers and ceiling fixtures with special "overdressed" shades are the statement pieces of your interior. With ambiance and atmosphere they will suffuse any space with style and personality, as well as illumination.

Make a big difference with one of our beautiful pieces. Our parrot chandelier with black shades and fringes will for example create an intimate atmosphere instantly.





Crystal and light, light and crystal. For decades, these two have proved the best marriage in enlightening and making an atmosphere. This chandelier in gold leaf featuring an abundance of crystal elements will enrich any space happily ever after.



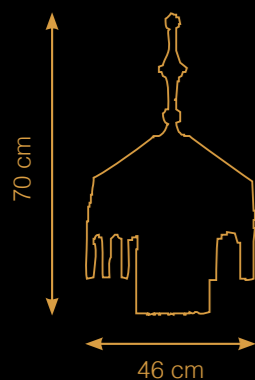
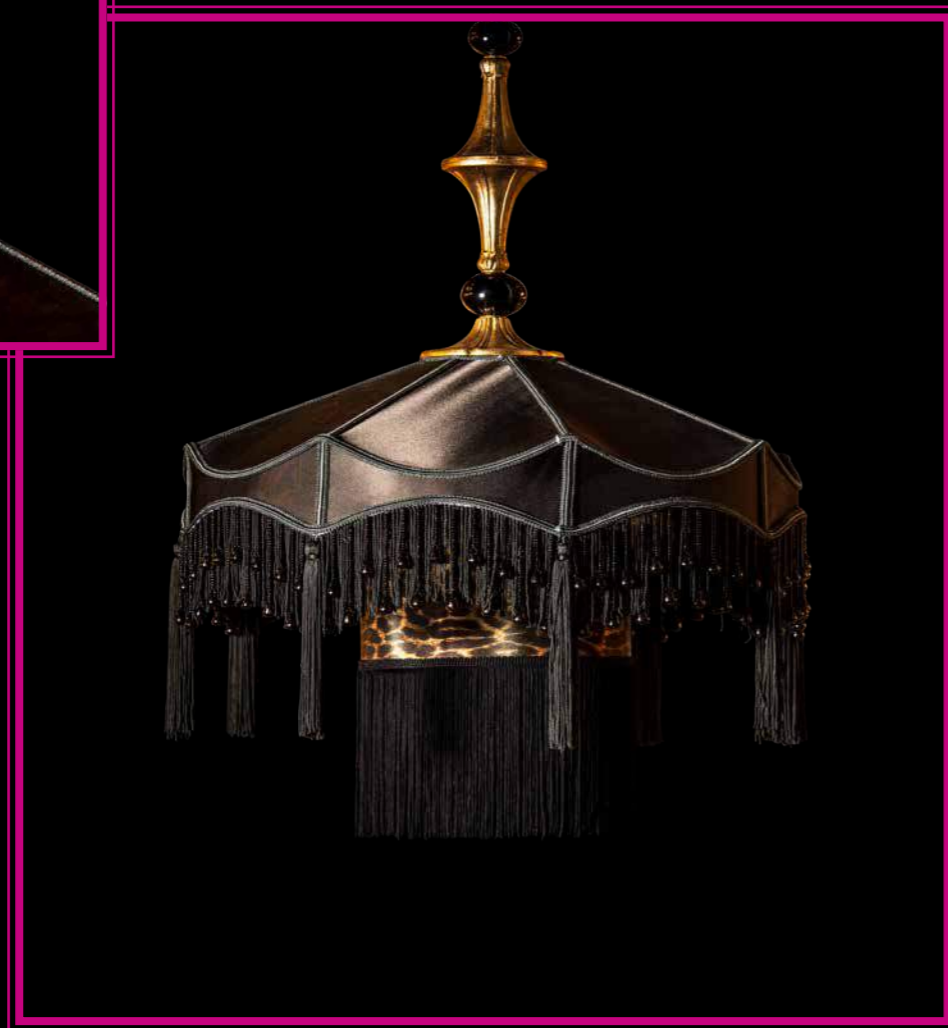
Itemnr: MM 2135 - MM 2134 - MM 2058
Model: Hanging lamp "Cascade de Cristal"
Material: Iron and crystal

Sockets: 4 / 9 / 22x E14 max. 40 Watt
Finish: Gold leaf
* Spec. sizes on request





This shade-in-shade pendant embodies the revival of a French boudoir. With its fringes and tassels just giving away that alluring leopard printed shade.



Itemnr: MM 2132
 Model: Hanging lamp "Oriental Dream" Socket: E27 max. 60 Watt
 Material: Brass and crystal Finish: Gold leaf with black crystal



With its gold, black and leopard a true Marie Martin fixture. The ultimate combination for making a special atmosphere while adding some mystery. Combine multiple of these pendants for an even stronger look.



Itemnr: MM 2133 - MM 2242
 Model: Hanging lamp "Tready points" Socket: E27 max. 60 Watt
 Material: Wood and iron Finish: Black with gold leaf points

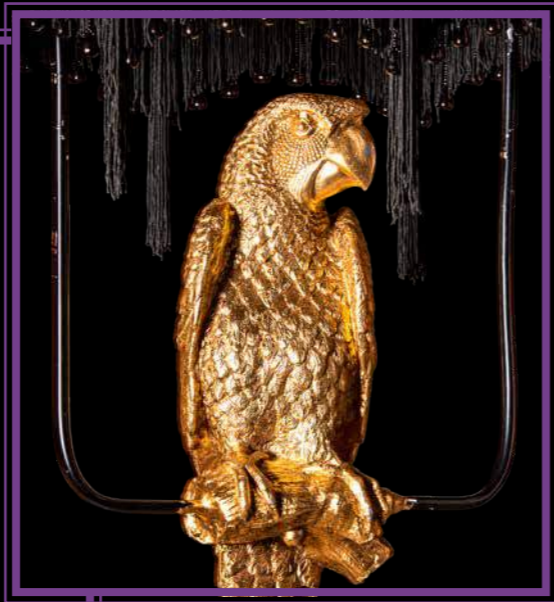


Our golden pine chandelier with pleated shades. The perfect choice when aiming for that look that is both beachy/tropical as it is très chic.

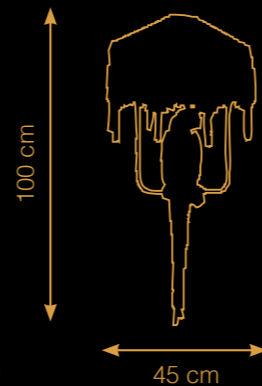


Itemnr: MM 2155
 Model: Hanging lamp "Piña Colada" Sockets: 6x E14 max. 40 Watt
 Material: Brass Finish: Gold leaf





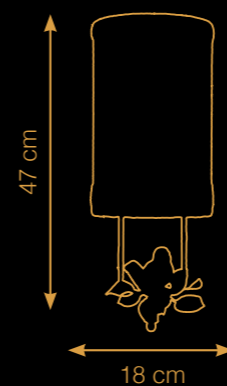
This exquisitely detailed parrot in gold leaf adds a touch of the exotic to your interior. A stunningly casted piece that looks very natural.



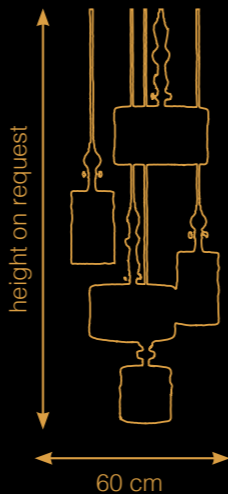
Itemnr: MM 2170
Model: Hanging lamp "Perroquet Têtu" Socket: E27 max. 60 Watt
Material: Brass and aluminium Finish: Gold leaf with dark bronze frame



Isn't she just lovely? This endearing little sparrow sheltered by a beautiful shade cheers up every space. Made of highly detailed brass parts and hand-finished in gold leaf.



Itemnr: MM 2275
Model: Hanging lamp "sweet birdy" Sockets: E14 max. 40 Watt
Material: Brass and crystal Finish: Gold leaf



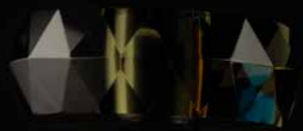
Itemnr: MM 2345

Model: Hanging lamp "Candy"

Material: Brass and crystal

Sockets: 5x E27 max. 60 Watt

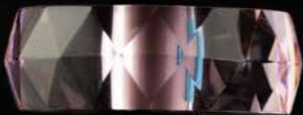
Finish: Gold leaf



Smoke



Orange



Pink



Blue



Yellow



Red



Green



Lila

Developing new products is the thing we love to do most. The latest addition to our collection is this fully-customizable hanging lamp Candy. The number of shades, the size, the fabric, trimmings and fringes; the possibilities to compose the lamp according to your preferences are endless! The basis is formed by elegant brass parts combined with crystals available in various shapes and colours. Everything is made by hand in our very own atelier, so allowing for your own ideal interpretation of this lamp. The result is a playful, unique hanging lamp, an eyecatcher designed by you!



CHAPTER TABLE LAMPS

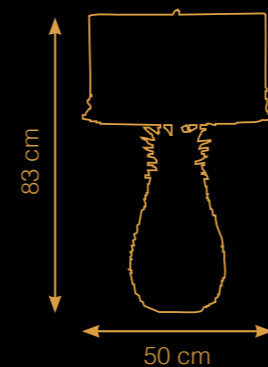
Our light

Enhance your space with additions from our range of special and extraordinary table lamps. Marie Martin features a selection of the finest designer lamps in a “overdressed” style. Our inspiration is coming from blending antiques, fashion and art in a fascinating and glamorous way.

Embrace luxury lighting to introduce style, stature and illumination. From beautiful rare table lamps to classic and statement designs, these additions will transform your space. Because of their portability, table lamps are also a convenient choice when redecoration or moving furniture around a space to create a fresh new look.



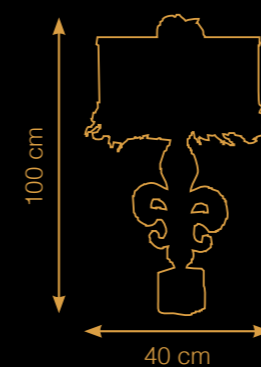
Every little leaf of this pineapple is made piece by piece and then glazed. The true handcraft makes these pieces ever so real. The finishing in gold leaf makes them ever so fancy.



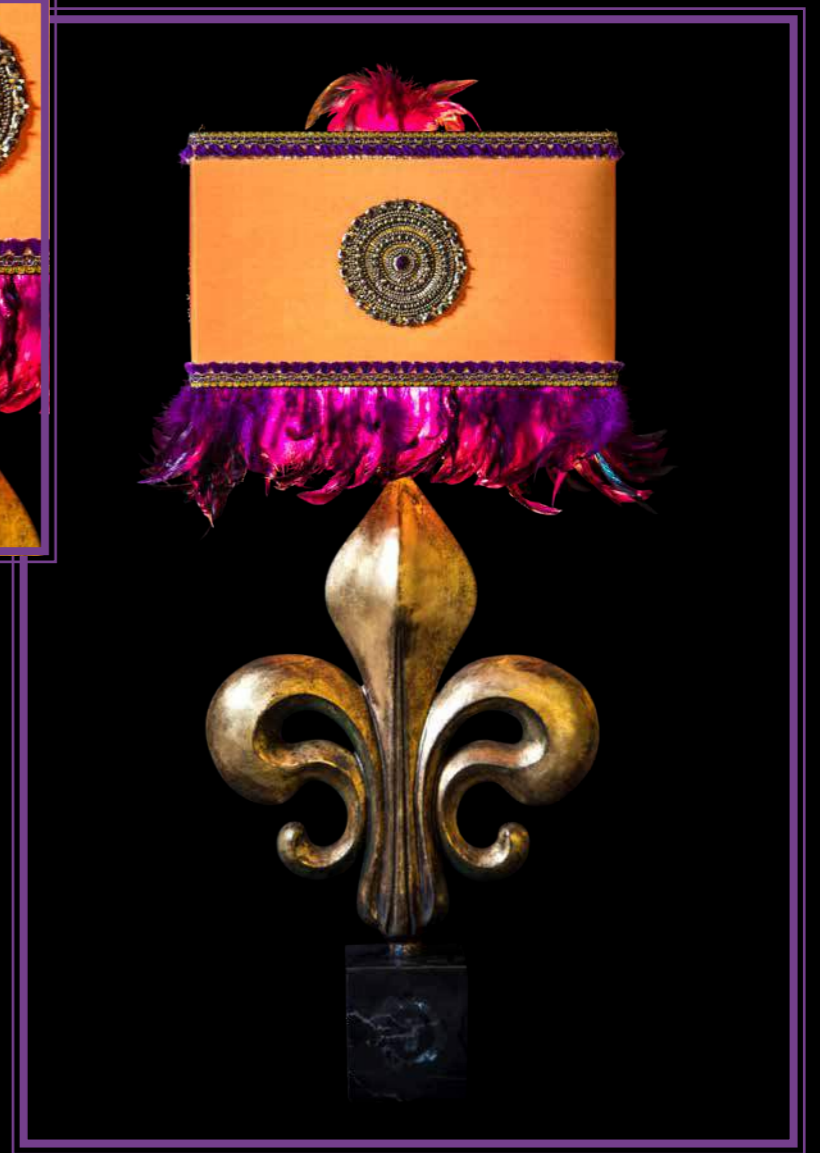
Itemnr: MM 103
Model: Table lamp "Golden pine xxi"
Material: Ceramics
Socket: E27 max. 60 Watt
Finish: Gold leaf with patine



This brass item is an icon in itself. The heavy base of black marble gives the lily its high class stand.

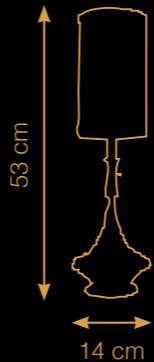


Itemnr: MM 107
Model: Table lamp "French lily"
Material: Brass and marble
Socket: E27 max. 60 Watt
Finish: Gold leaf





Itemnr: MM 2023
Model: Table lamp "Venice vert"
Material: Brass and glass
Socket: E27 max. 60 Watt
Finish: Gold leaf



Itemnr: MM 2130
Model: Table lamp "Venice d'azur"
Material: Brass and glass
Socket: E27 max. 60 Watt
Finish: Gold leaf



This exquisitely detailed playful parrot adds a touch of the exotic to your interior. With its feathered shade, this piece is a real eye-catcher in any room!



Itemnr: MM 2040 - MM 2041
Model: Table lamp "Dirty speaking parrot"
Material: Brass
Socket: E27 max. 60 Watt
Finish: Green



Small and cute! This monkey table lamp with its silk shade and crazy green feathers has a lot of attitude and adds a touch of botanical to your interior.



Itemnr: MM 2047 - MM 2048
Model: Table lamp "Feather monkey" Socket: E14 max. 40 Watt
Material: Brass Finish: Gold leaf with green



A pineapple is the sign of hospitality. On a fine spot, this sand casted brass lamp will instantly dress up its surroundings.

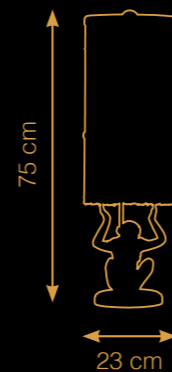


Itemnr: MM 2049
Model: Table lamp "Petit bronze pine small" Socket: E14 max. 40 Watt
Material: Brass Finish: Shiny brass with green leafs

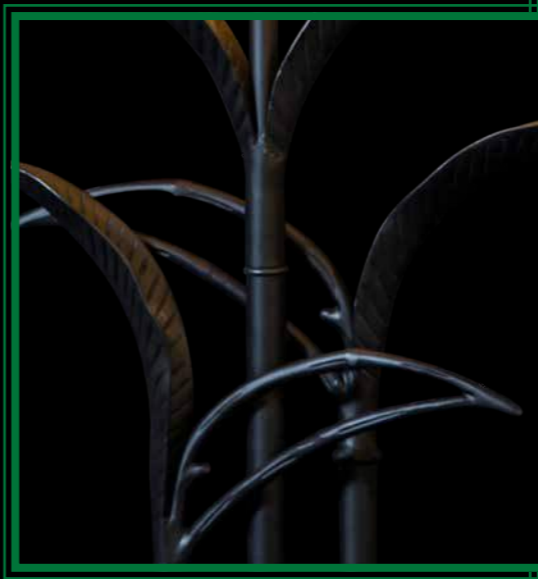




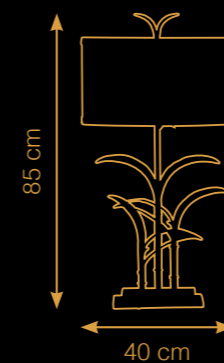
Sitting with its hands up, this handmade brass monkey almost seems to hold up the silk shade. Coloured by hand beautifully with remarkable attention to detail.



Itemnr: MM 2055
Model: Table lamp "Hands up" Socket: E27 max. 60 Watt
Material: Brass Finish: Gold leaf with green accents



Inspired by the graceful bamboo, this table lamp is very botanical in an absolute matt black finish. This item is a real all-rounder; it fits everywhere. The leopard shade adds just that bit of fancy as well.

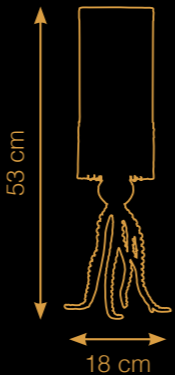


Itemnr: MM 2107
Model: Table lamp "Bambou noir" Socket: E27 max. 60 Watt
Material: Brass Finish: Matt black





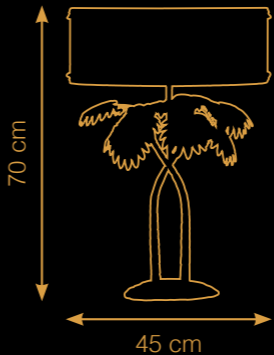
Small and elegant with a lot of attitude.
The beauty of the sea translated to a
stylish lighting piece.



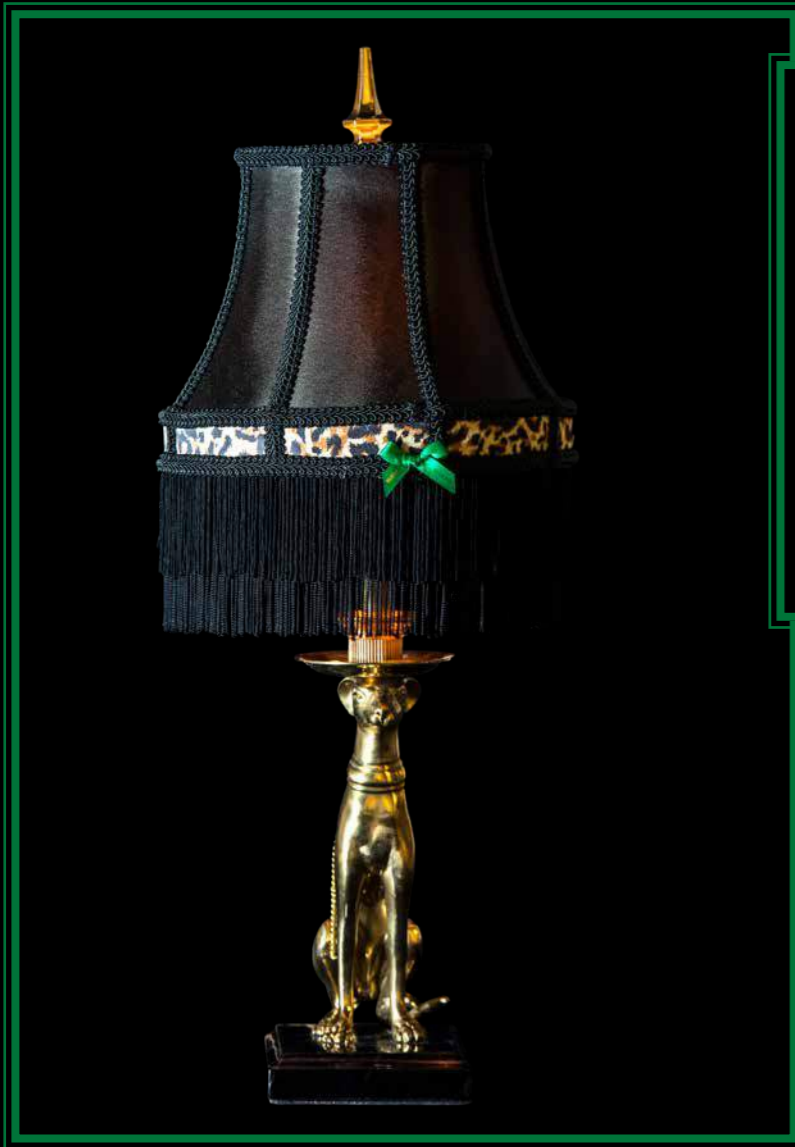
Itemnr: MM 2094
Model: Table lamp "Octo" Socket: E14 max. 40 Watt
Material: Brass Finish: Natural brass



The shiny brass leaves make this lamp
very "Great Gatsby" looking. This piece
will have the room exude that typical
roaring 20's feel.



Itemnr: MM 2056
Model: Table lamp "Preveli Beach" Socket: E27 max. 60 Watt
Material: Brass Finish: Natural brass



The classy brass dog. Beautiful yet very stubborn with a black transparent shade and a touch of leopard. Of course.



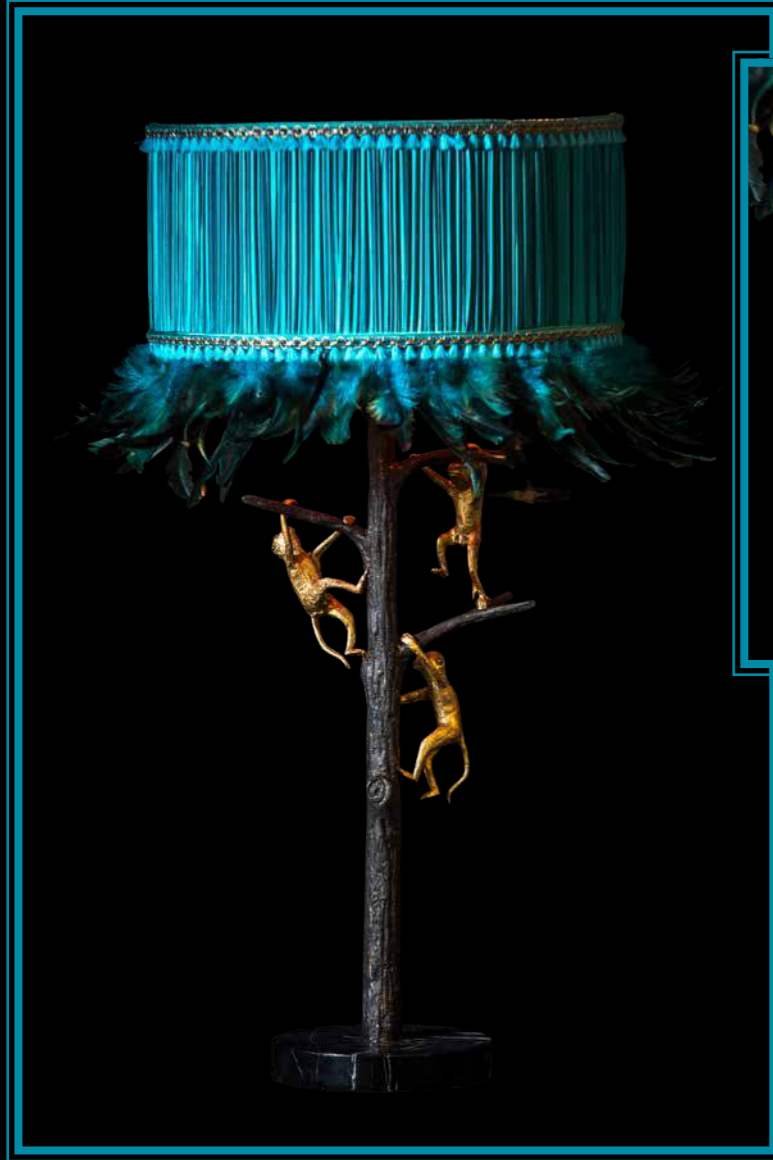
Itemnr: MM 2106
Model: Table lamp "Le Chien" Socket: E27 max. 60 Watt
Material: Brass Finish: Natural brass



Very classic, very timeless. Put this gorgeous fish on a dresser for example and it will instantly furnish it with a lot of class.



Itemnr: MM 2102
Model: Table lamp "The Tail Up" Socket: E27 max. 60 Watt
Material: Brass Finish: Dark brass



Sand casted tree with three climbing monkeys, so sweet! With its natural dark brass colour with golden monkeys, this piece will never be a bore.



Itemnr: MM 2112

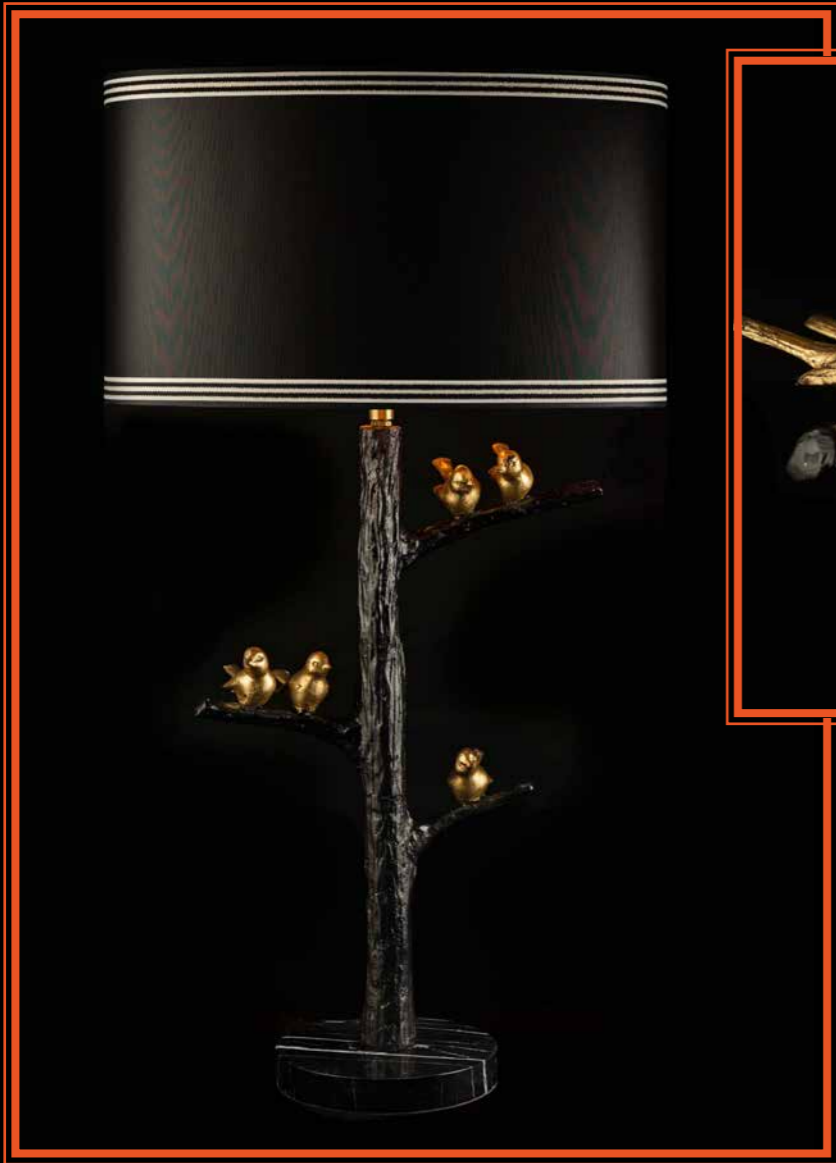
Model: Table lamp “Monkey Tree”

Socket: E27 max. 60 Watt

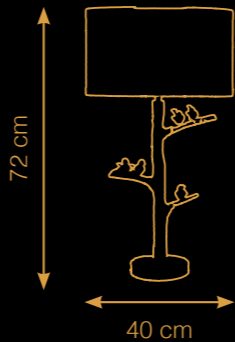
Material: Brass

Finish: Dark brass with gold leaf monkeys

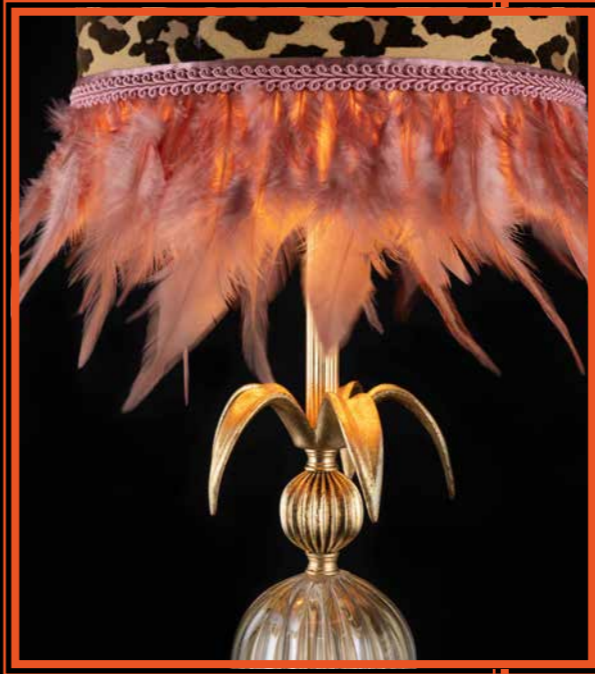




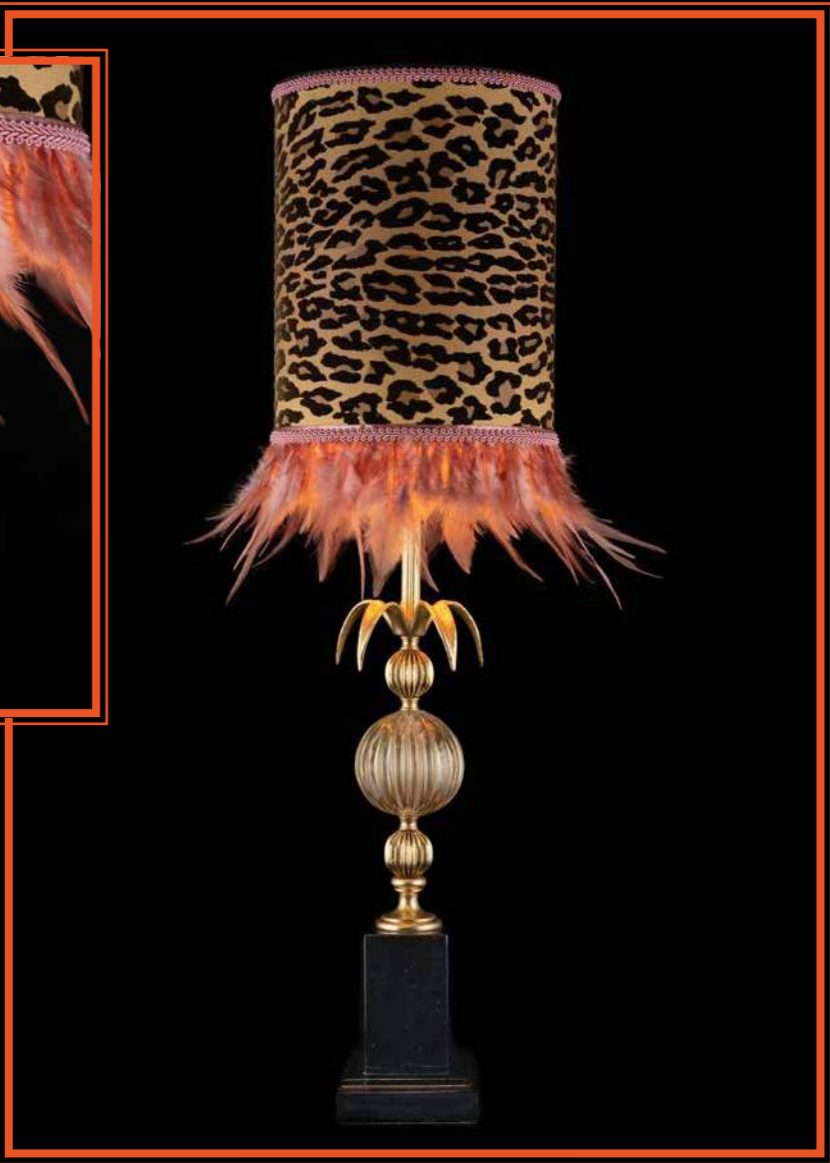
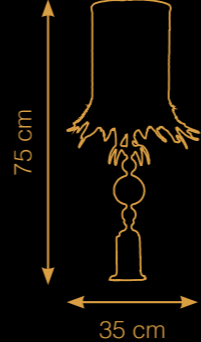
Put this piece in your sunroom/
greenhouse and it will delight its
visitors with the warmest welcome.



Itemnr: MM 2213
Model: Table lamp "Chirp Chirp"
Material: Brass and marble
Sockets: E27 max. 60 Watt
Finish: Dark bronze with gold leaf birds



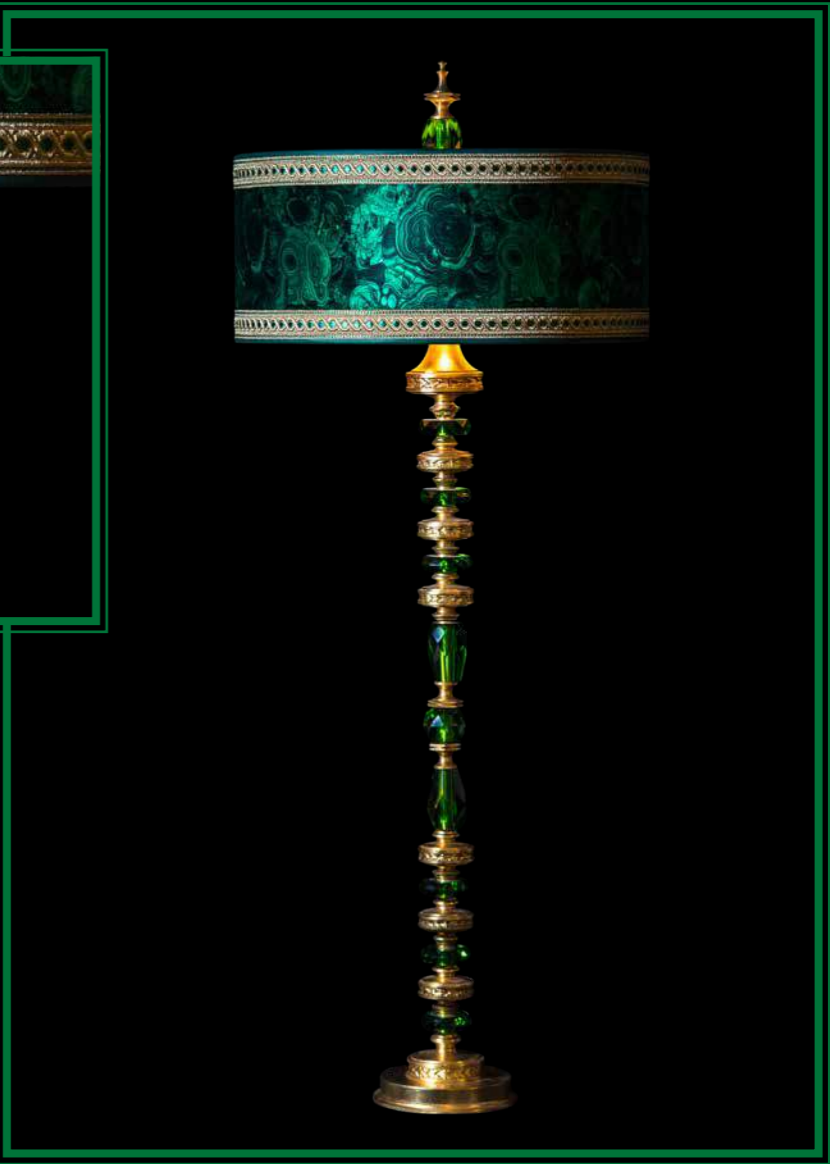
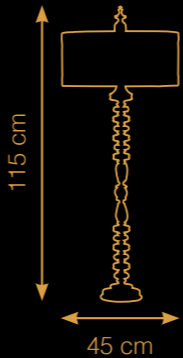
Brass palm leaves with a mouth blown
glass bowl in the centre. A little out of
the box with a leopard shade and pink
feathers. A real eye-catcher in your
interior!



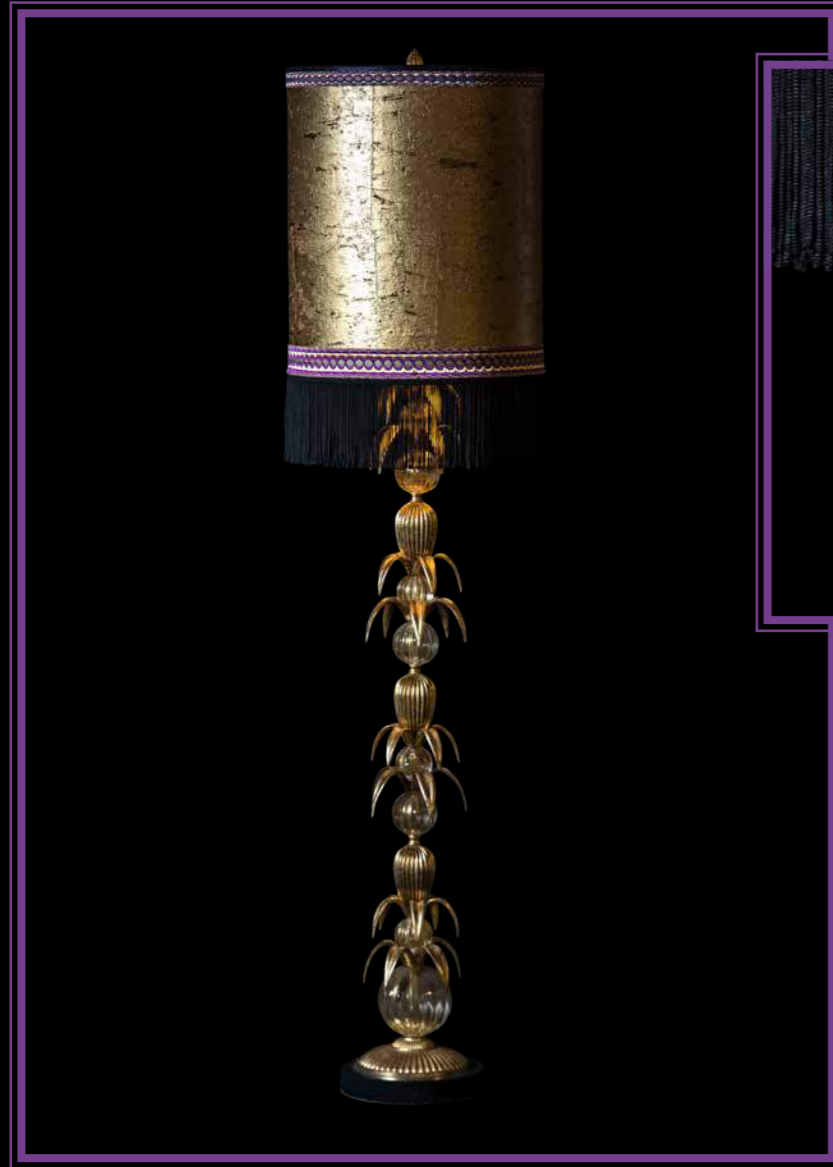
Itemnr: MM 2219
Model: Table lamp "Anvers"
Material: Brass, crystal and marble
Sockets: E27 max. 60 Watt
Finish: Gold leaf



Emerald green, one of our absolute favourite colours. Especially in crystal, it provides an amazing twist of the light.



Itemnr: MM 2116
Model: Table lamp "Callier" Socket: 2x E27 max. 60 Watt
Material: Brass and crystal Finish: Gold leaf with emerald green crystal



With its brass palm leaves and mouth blown glass balls, this tall lamp is classy yet sassy. A little out of the box with a stylish golden shade with violet touch.



Itemnr: MM 2118

Model: Table lamp "Anvers large"

Socket: 2x E27 max. 60 Watt

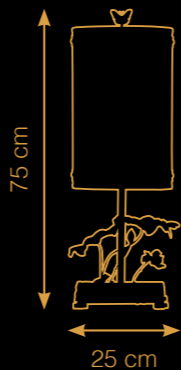
Material: Marble, brass and crystal

Finish: Gold leaf





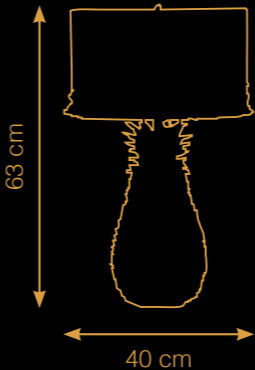
A beautiful arrangement of natural leaves with a sweet frog and elegant dragonfly. With its handcrafted shade, it becomes a unique and charming piece.



Itemnr: MM 2167 - MM 2168
Model: Table lamp "Frog fairy tale" Socket: E27 max. 60 Watt
Material: Brass Finish: Natural brass



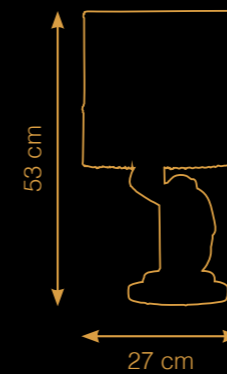
In emerald green finish with gold leaves, the pineapple does not lose its welcoming friendliness. All hand sculpted and coloured!



Itemnr: MM 2123
Model: Table lamp "Green pine" Socket: E27 max. 60 Watt
Material: Ceramics Finish: Green with golden leafs



The casted brass sitting monkey is lovely in every way. With the orange velvet shade and green fringes tastefully translated in the finishing of the lamp base.



Itemnr: MM 2127

Model: Table lamp "Ombrello Monkey"

Material: Brass

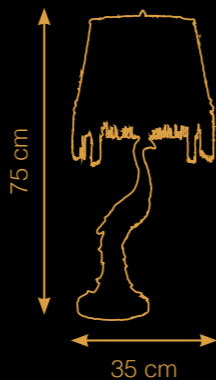
Socket: E27 max. 60 Watt

Finish: Dark bronze with green





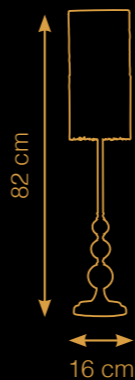
A sand casted sculpture of the most beautiful and proud bird on earth. A true treasure in all its glory and display.



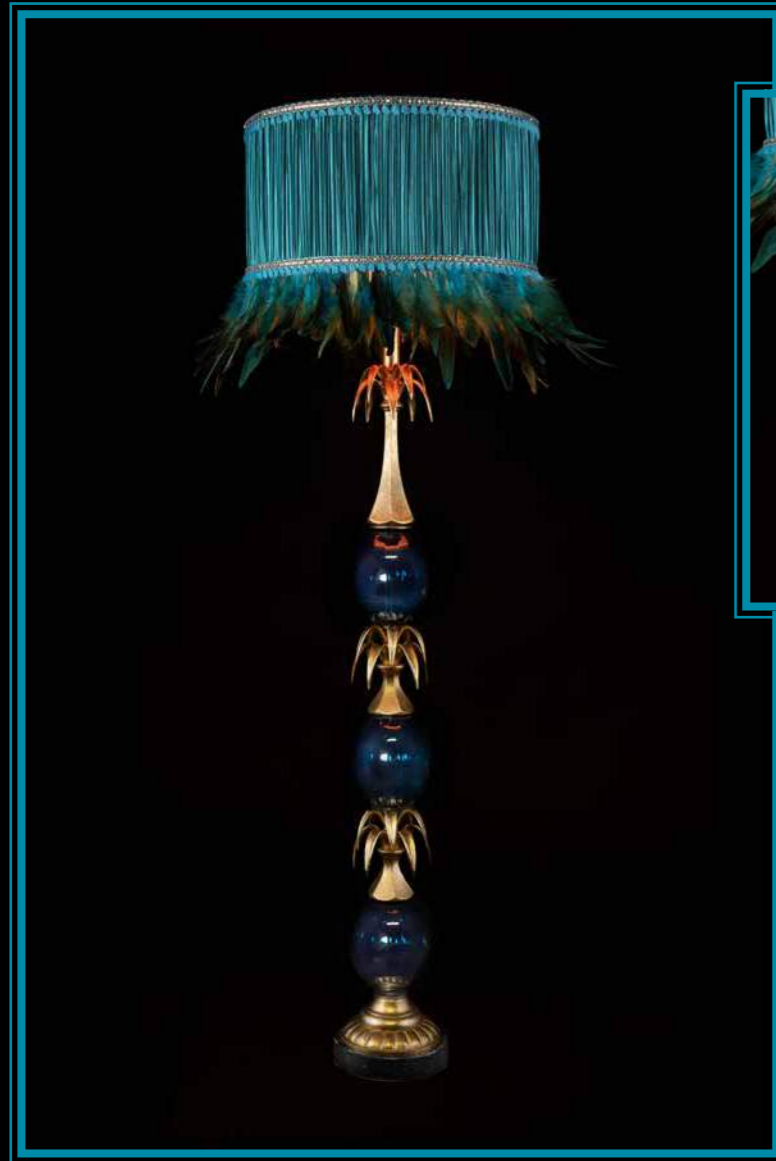
Itemnr: MM 2157
Model: Table lamp "Perky Peacock" Socket: E27 max. 60 Watt
Material: Brass and marble Finish: Natural brass



High and elegant, these are particularly nice to put as a pair on your classic chimney! Lighting up every winter evening.



Itemnr: MM 2128
Model: Table lamp "Tres Amis" Socket: E27 max. 60 Watt
Material: Brass and crystal Finish: Gold leaf



Such a playful yet lush combination these glass bowls, beautifully detailed brass parts and pleated shade with feathers. All in gorgeous blue hues that are as uplifting as they are soothing, we love it!



Itemnr: MM 2261

Model: Table lamp "Pineal"

Material: Brass, marble and mouthblown glass

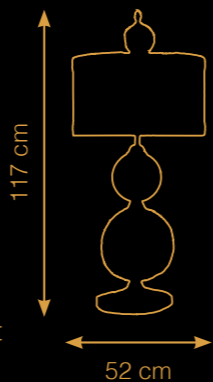
Sockets: E27 max. 60 Watt

Finish: Gold leaf





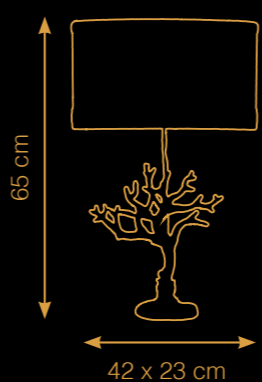
What a lush combination this blue coloured glass and brass! The subtle translucency of the glass adds a lovely depth and liveliness. Completed with a gorgeous matching shade this lamp is not to be overlooked!



Itemnr: MM 2260
Model: Table lamp "Pineal big"
Material: Brass, marble and mouthblown glass
Sockets: 2x E27 max. 60 Watt
Finish: Gold leaf



This piece instantly teleports you to faraway places. Brass casted coral in a richly detailed gold leaf finish topped with a classy oval shade in a vibrant colour with gold-black trimmings.

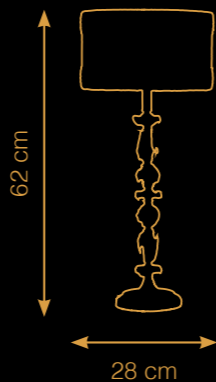


Itemnr: MM 2098
Model: Table lamp "Coral twig"
Material: Brass
Sockets: E27 max. 60 Watt
Finish: Gold leaf





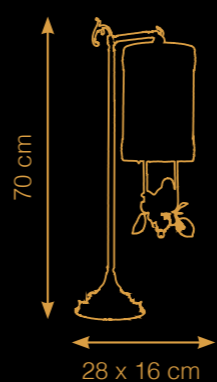
A basis of elegant brass parts combined with crystals available in various shapes and colours leave you the opportunity to customize your own table lamp. And even better, the same goes for the shade!



Itemnr: MM 2340
Model: Table lamp "Candy" Sockets: E27 max. 60 Watt
Material: Brass and crystal Finish: Gold leaf



Isn't she just lovely? This endearing little sparrow sheltered by a beautiful shade cheers up every space. Made of highly detailed brass parts and hand-finished in gold leaf.



Itemnr: MM 2277
Model: Table lamp "sweet birdy" Sockets: E14 max. 40 Watt
Material: Brass and crystal Finish: Gold leaf

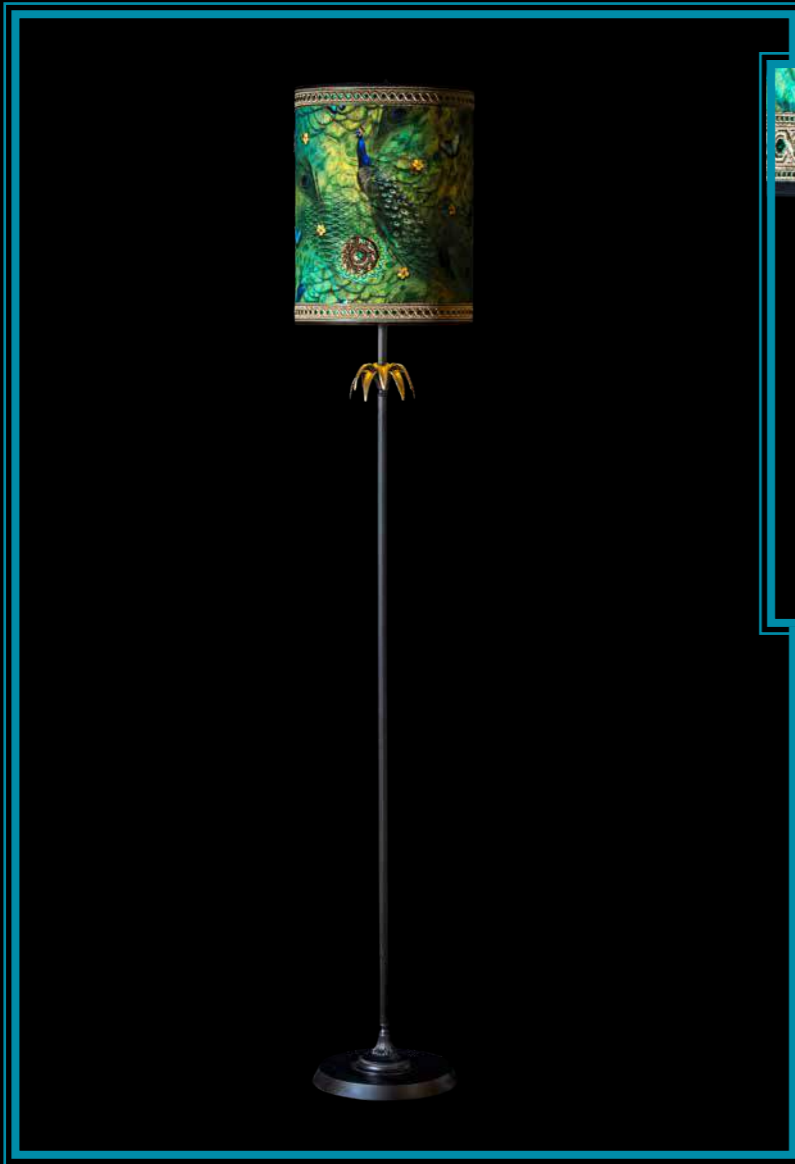


CHAPTER FLOOR LIGHTING

Workshop, craft and shades

One of our most important assets is the painting studio, as we call “the workshop”. It is from here we transform simple metal, wood and ceramic to become one of our exquisite finished pieces. Over the decades we have created scores of new and elaborate techniques that include a lot of different golden colours. Each new collection challenges us to create new finishes, from convincingly resembling aged plaster to perfecting the patina of a real antique piece.

Every base comes with its own unique shade, our personal recommendation. Nonetheless, you can also customize your shades' shape, colour, trimming and fringes. We will always make sure the quality is exquisite. Every shade is made by hand, one by one, in our shade studio.



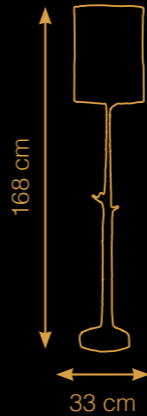
High and elegant this piece brings a refined botanical feel to every interior. The shade can be customized in various colours allowing to add your very own touch.



Itemnr: MM 2027
Model: Floor lamp "Crown Or" Socket: E27 max. 60 Watt
Material: Brass Finish: Black with golden leafs



How botanical can it get? This sand casted brass floor lamp in dark brass with golden birds fits in every corner.



Itemnr: MM 2043
Model: Floor lamp "Birdy's Or" Socket: E27 max. 60 Watt
Material: Brass Finish: Dark brass with golden birds



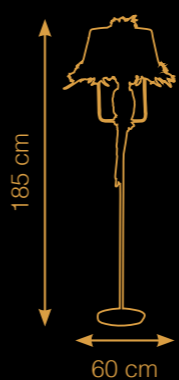
The shiny brass leaves make this lamp very "Great Gatsby" looking. This piece will have the room exude that typical roaring 20's feel.



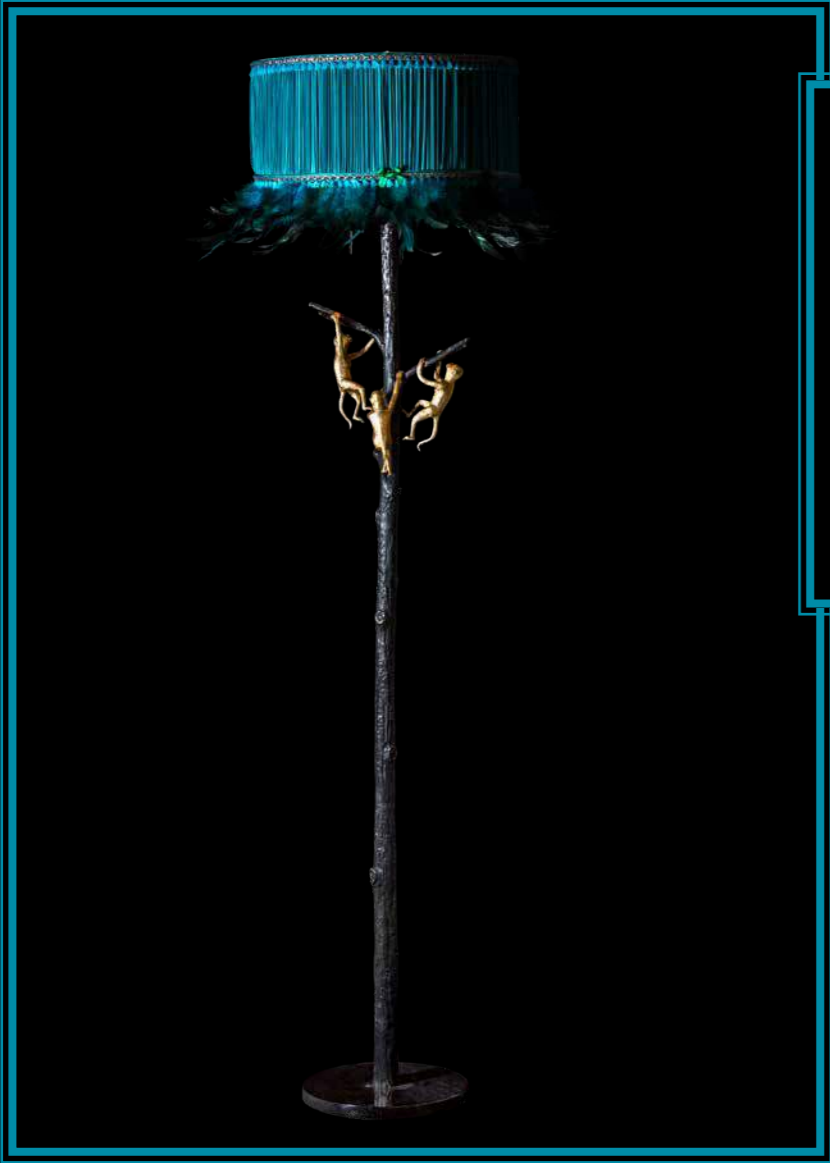
Itemnr: MM 2057
Model: Floor lamp "Preveli Beach" Socket: E27 max. 60 Watt
Material: Brass Finish: Natural brass



This colourful botanical animal is something different. Something one has never seen before, like Annabel's in Mayfair, London. Completed with a real feathered shade.



Itemnr: MM 2059
Model: Floor lamp "Perroquet tête" Socket: E27 max. 60 Watt
Material: Brass, aluminium and marble Finish: Dark brass with gold leaf



Sand casted tree with three climbing monkeys, so sweet! With its natural dark brass colour with golden monkeys, this piece will never be a bore.



Itemnr: MM 2111
Model: Floor lamp "Monkey tree"
Material: Brass
Socket: E27 max. 60 Watt
Finish: Dark brass with gold leaf monkeys



This floor lamp is one of our absolute favourites. The crystal (available in various colours) provides such a lovely twist of the light. Lush!



Itemnr: MM 2117
Model: Floor lamp "Callier"
Material: Brass, marble and crystal
Finish: Gold leaf with turquoise crystal
Sockets: 2x E27 max. 60 Watt



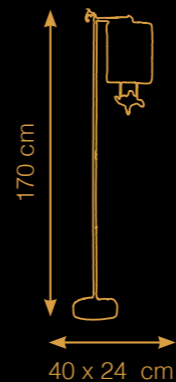
Talking about a showstopper! This super tall sand casted sculpture of the most beautiful and proud bird is a true treasure.



Itemnr: MM 2156
Model: Floor lamp "Perky Peacock" Sockets: 10x E14 max. 40 Watt
Material: Brass Finish: Natural brass



Isn't she just lovely? This endearing little sparrow sheltered by a beautiful shade cheers up every space. Made of highly detailed brass parts and hand-finished in gold leaf.



Itemnr: MM 2278
Model: Floor lamp "sweet birdy" Sockets: E14 max. 40 Watt
Material: Brass, marble and crystal Finish: Gold leaf



CHAPTER WALL LIGHTS

Colouring the curious

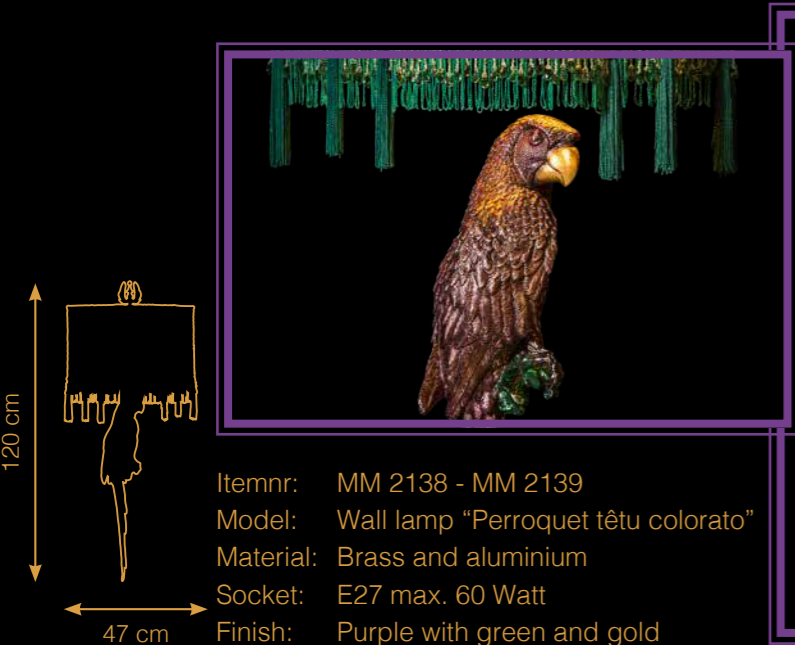
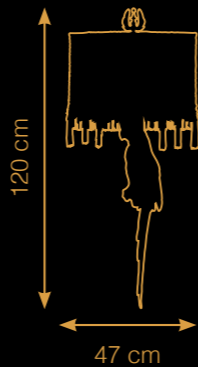
*We like colour, we love colour, we need colour.
There is no such thing as ugly colours, it is just the
way you use them. The light, the space and the full,
right colour scheme make that colours can
really reinforce each other.*

Elegant wall lights:
the saving grace of small spaces,
sconces shed the most sophisticated light to a room.
Whether they're parrots or crystal embellished, wall lights
can really dress up the wall and add that subtle warm feel.
As you'll be able to see, we love emerald green shades.
It is one of our most favourite colours, for the positive
feelings, balance and harmony it represents as
well as its sumptuous, rich quality.

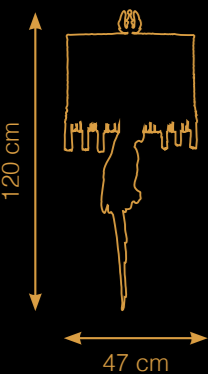




Itemnr: MM 2053 - MM 2054
Model: Wall lamp "Perroquet tête gold"
Material: Brass and aluminium
Socket: E27 max. 60 Watt
Finish: Gold leaf



Itemnr: MM 2138 - MM 2139
Model: Wall lamp "Perroquet tête colorato"
Material: Brass and aluminium
Socket: E27 max. 60 Watt
Finish: Purple with green and gold



A human hand, casted in brass holding the wire. Very decorative element that can be combined with any shade you would wish. Available as a set, nice alongside a bed for instance.



Itemnr: MM 2066 – MM 2067
Model: Wall lamp "Human hand"
Material: Brass
Sockets: E27 max. 60 Watt
Finish: Natural brass



This pair of beautiful wall lights is essential for the ultimate Marie Martin look. The sand casted brass man and woman are holding a beautiful emerald green Honan silk shade. With empire stripes and a small golden star.



Itemnr: MM 2124 - MM 2125
Model: Wall lamp "Torica Maschile / Femminile"
Material: Brass
Socket: E14 max. 40 Watt
Finish: Multiple colours



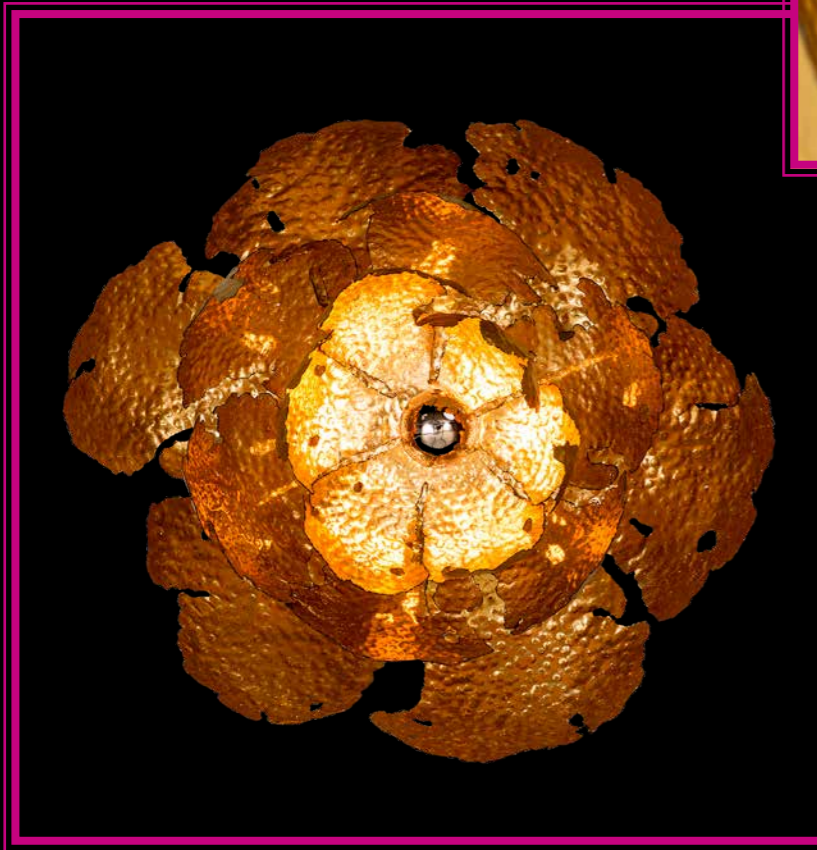
Ideal for projects or a boutique hotel. Picture these in all corridors, they would instantly and fully dress up the space.



* also available in a longer variant.



Itemnr: MM 2129
Model: Wall lamp "Le Duke petit"
Material: Brass
Socket: E14 max. 40 Watt
Finish: Gold leaf

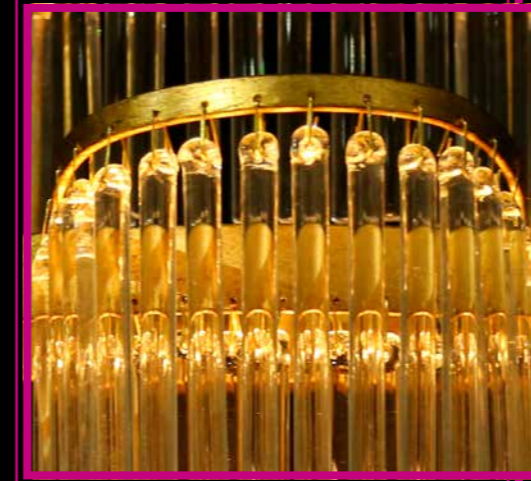


Made from hammered metal then hand coloured with gold leaf, these flowers are so very pleasing to the eye. Enriching the light with a warm golden reflection, these fixtures can be used both on the wall as on the ceiling.

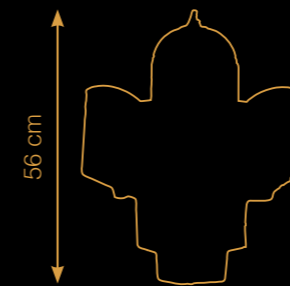


Ø25 / Ø40 / Ø60 cm

Itemnr: MM 2141 - MM 2211 - MM 2216
Model: Wall lamp "Water Lily Amazonica" Socket: E14/E27 max. 40 Watt
Material: Iron Finish: Gold leaf



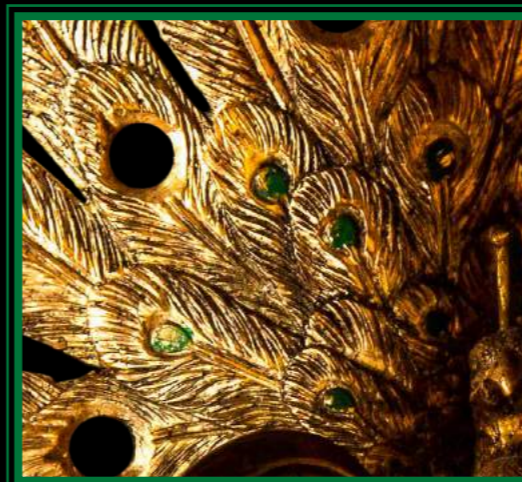
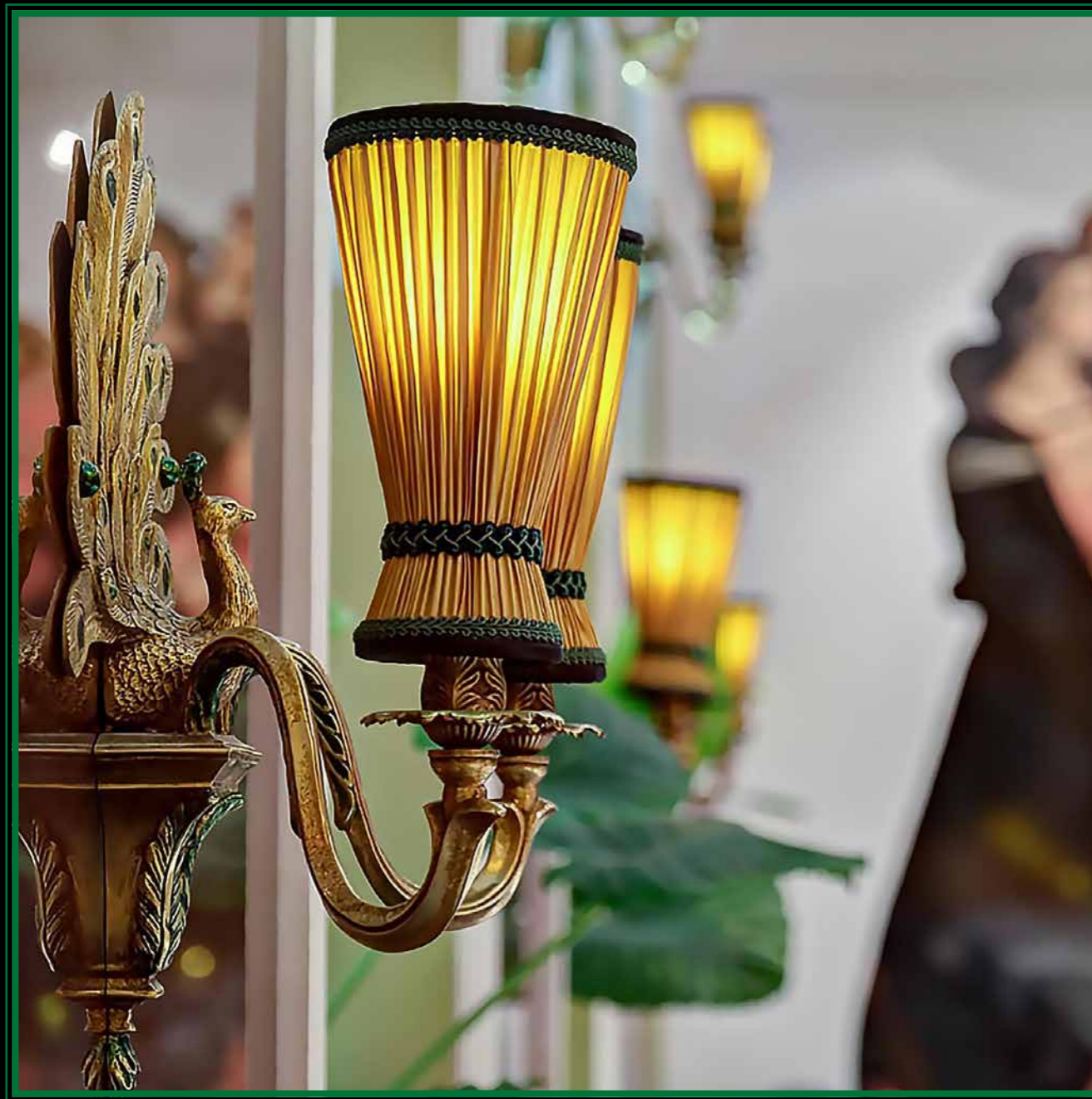
Crystal and light, light and crystal. For decades, these two have proved the best marriage in enlightening and making an atmosphere. This wall lamp in gold leaf featuring an abundance of crystal elements will enrich any space happily ever after.



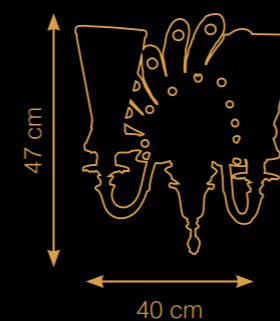
40 cm

Itemnr: MM 2136
Model: Wall lamp "Cascade de Cristal" Sockets: 2x E14 max. 40 Watt
Material: Iron and crystal Finish: Gold leaf





This peacock adds a majestic quality when displayed on a beautifully wall papered wall. Crafted from prime material showing true artist expertise.

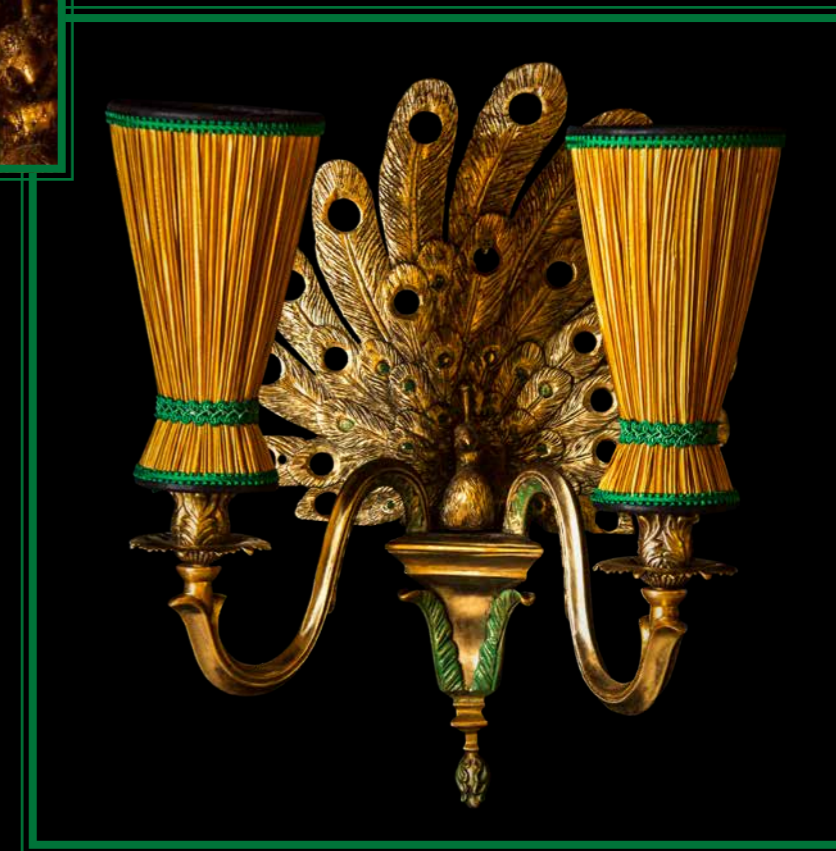


Itemnr: MM 2166

Model: Wall lamp "Perky Peacock" Sockets: 2x E14 max. 40 Watt

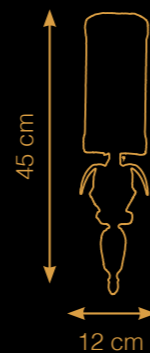
Material: Brass

Finish: Natural brass with green accents





A basis of elegant brass parts combined with crystals available in various shapes and colours leave you the opportunity to customize your own wall lamp. Change the colour/shapes of the crystals and/or shade, it is all possible!



Itemnr: MM 2342
 Model: Wall lamp "Candy" Sockets: E14 max. 40 Watt
 Material: Brass and crystal Finish: Gold leaf



Isn't she just lovely? This endearing little sparrow sheltered by a beautiful shade cheers up every space. Made of highly detailed brass parts and hand-finished in gold leaf.



Itemnr: MM 2276
 Model: Wall lamp "sweet birdy" Sockets: E14 max. 40 Watt
 Material: Brass and crystal Finish: Gold leaf



CHAPTER FURNITURE

Our range of poufs and furniture presents both style and functionality. Always with a classic touch, some colour and fringes. No fringes, no furniture. Inspired by the classic Paris burlesque style, handmade by Dutch artisans.

Our items are a testament to fine Dutch furniture design. Add colour and textural beauty to your space with the violet Garbo pouf. Flawlessly handmade in Holland with super-soft velvet upholstery. Every product is made-to-order by our skilled Marie Martin team. It's that expertise that enables us to offer flexibility and customisation. From the smallest details of the size specification, changing the proportions of a piece of furniture to designing a totally bespoke piece.

We come across new and interesting requests every day and we enjoy the very collaborative process of creating a unique piece. Naturally, there are some limitations and when that happens we are always happy to explore the options and possibilities.

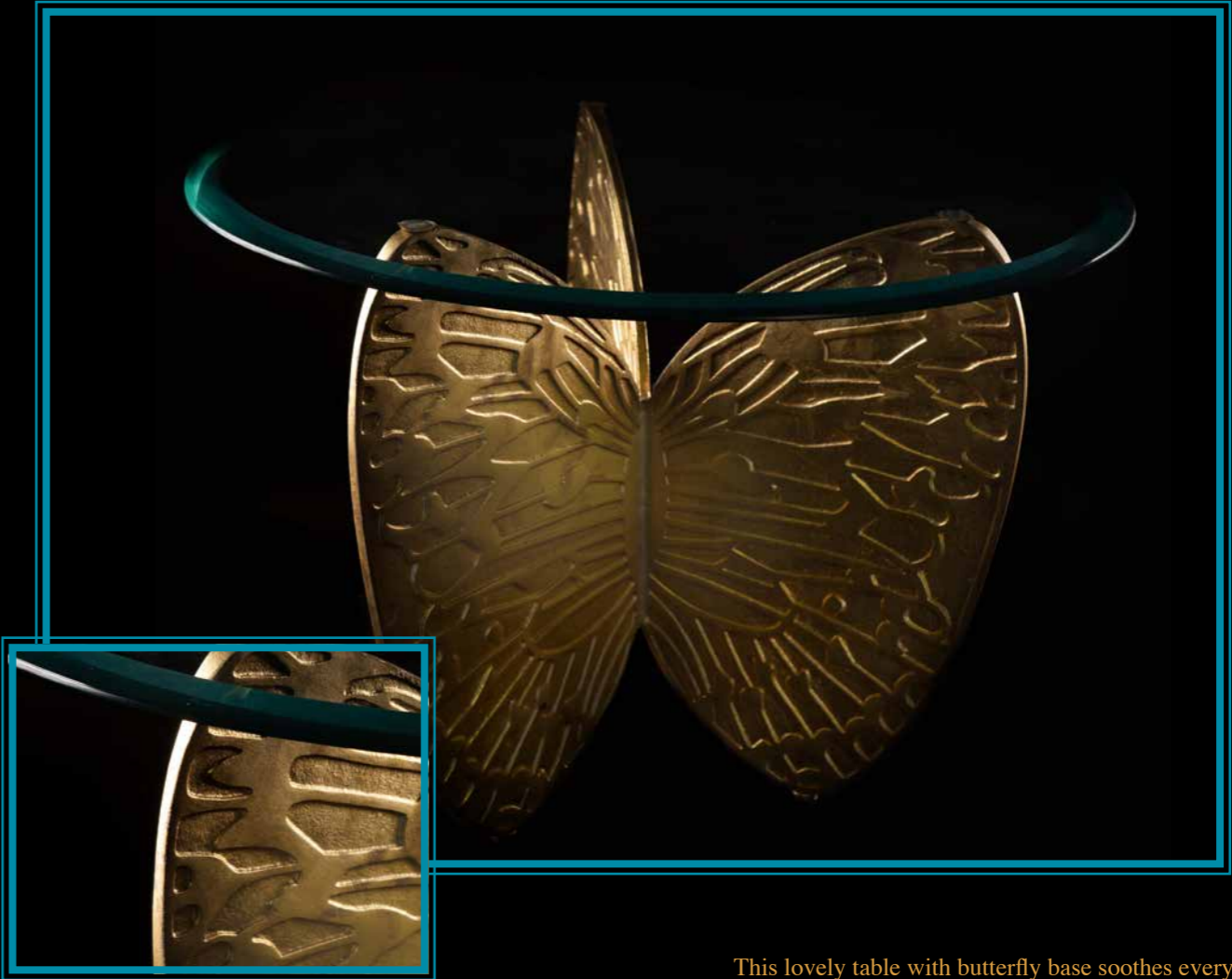




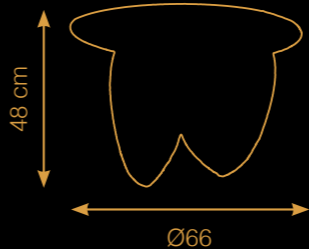
What a graceful silhouette! The glass top allows perfect viewing on the long and delicate wings so typical of the dragonfly.



Itemnr: MM 2311
Model: Table "Dragonfly"
Material: Aluminium and glass
Finish: Gold leaf



This lovely table with butterfly base soothes every space with its elegant, curved shapes. The rich gold leaf finish is done by hand and adds to a luxurious look.



Itemnr: MM 2313
Model: Table "Butterfly low"
Material: Aluminium and glass
Finish: 'Gold leaf



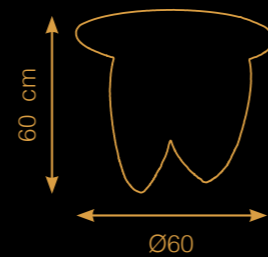
This lovely table with butterfly base soothes every space with its elegant, curved shapes.
The rich gold leaf finish is done by hand and adds to a luxurious look.

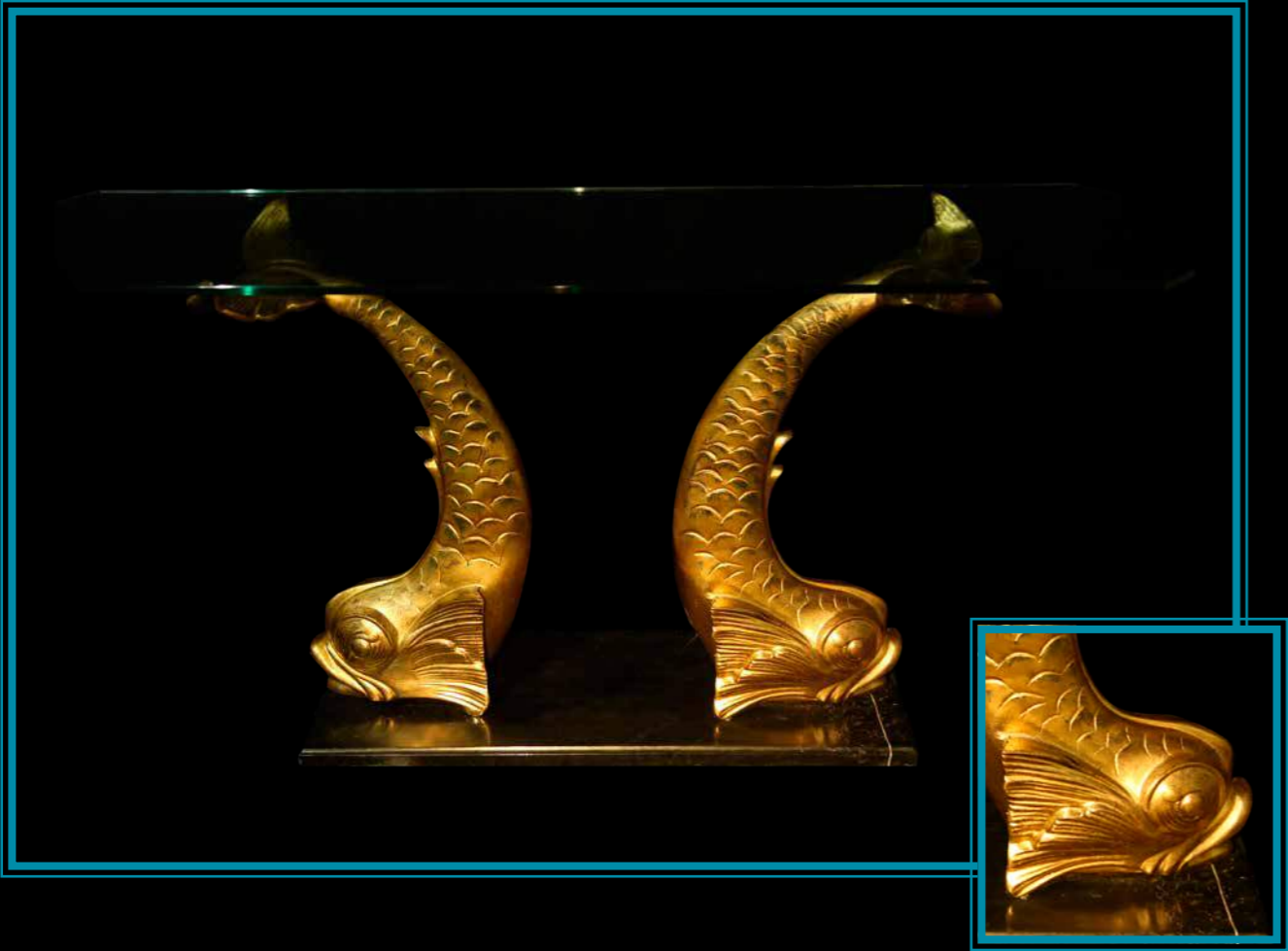
Itemnr: MM 2314

Material: Aluminium and glass

Model: Table "Butterfly high"

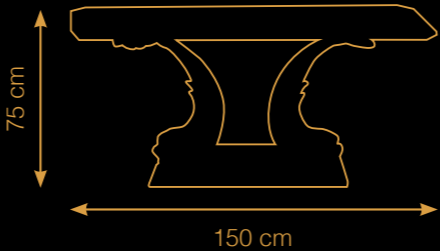
Finish: Gold leaf





Glorious Hollywood Regency Koi fish console table made from sand casted brass with a glass top. This is a real eye-catcher, very vintage, very fancy.

Itemnr: MM 2137
Model: Table "Les Deux Poisson"
Material: Brass, marble and glass
Finish: Gold leaf



Hollywood Regency small bamboo end table with glass top. So very organical, so very elegant.

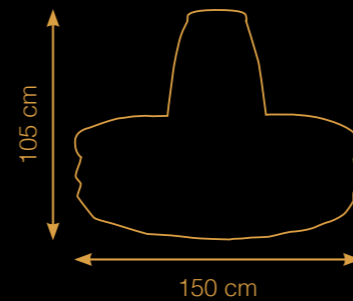
Itemnr: MM 2152
Model: Table "bamboo d'or 3 layers"
Material: Iron and glass
Finish: Gold leaf
Size 36 x H80 cm

Itemnr: MM 2153
Model: Table "bamboo d'or 1 layer"
Material: Iron and glass
Finish: Gold leaf
Size 45 x H56 cm

Itemnr: MM 2154
Model: Table "bamboo d'or round"
Material: Iron and glass
Finish: Gold leaf
Size Ø40 x H64 cm



Incorporate colour and textural beauty with the Garbo pouf. Flawlessly handmade in The Netherlands, with super soft velvet upholstery.



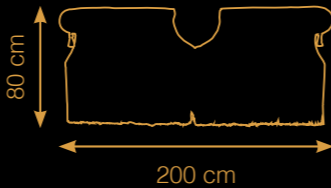
Itemnr: MM 5100
Model: Drapé

Finish: Purple Violette
* Other finishes on request





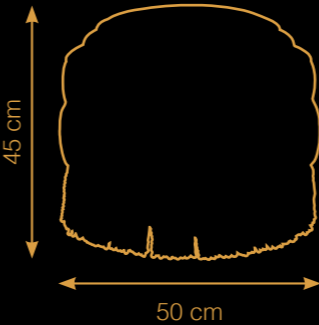
These emerald green chairs are beautifully handmade in The Netherlands by expert craftsman. The design is luxuriously upholstered in velvet.



Itemnr: MM 5101 Finish: Emerald Green
Model: Boyd * Other finishes on request



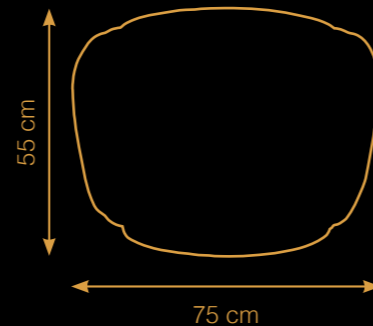
Incredible durability with an irresistible appearance. For that exclusive feeling this pouf features an incorporated brass casted circular ring! A classic touch on a unique and extravagant piece of decorative furniture.



Itemnr: MM 5102 – MM 5103 Finish: Purple Violette & Emerald Green
Model: Garbo * Other finishes on request



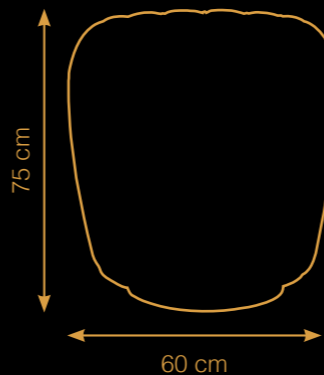
Upholstered in a soft, colourful satin, the ZUCCA stool is a fabulous hybrid of Mid-century regency and Art Deco styles.



Itemnr: MM 5104
Model: Zucca
Finish: Blue
* Available in different sizes and fabrics



Upholstered in a soft, colourful crushed velvet, the ZUCCA stool is a fabulous hybrid of Mid-century regency and Art Deco styles.



Itemnr: MM 5105
Model: Zucca
Finish: Green
* Available in different sizes and fabrics



CHAPTER LUXURY HOME ACCENTS & ACCESSORIES

*Decoration is the jewellery of your home.
Dress your space with vases, unique ornaments and
pretty faux florals for a flawlessly finished look.
Without the right accents your room will not
be finished at all. Make your own boudoir
with our beautiful pieces.*

Our creations and work demonstrate the excellence of forgotten arts, using materials and techniques that are partly traditional and partly evolutionary. Design is ingrained into our DNA, where each piece embraces uniqueness, in a timeless character. It is our mission to surprise you with every creation. Our collection of cushions, for example, is embroidered with real metal thread. Own designs in beautifully coloured velvets with lovely marabout trimmings and surprising back, with leopard prints and classic forms; these cushions can be used everywhere.

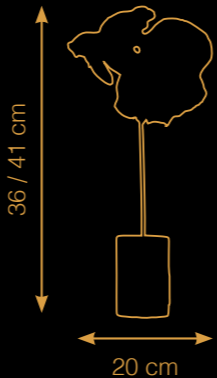




A stylish black marble base holding a glossy golden or natural brass goldfish. Perfect for that radiant finishing touch!

Itemnr: MM 2060 – MM 2061
MM 2175 – MM 2176
Model: Decoration “Goldfish Fly”

Material: Brass and marble
Finish: Gold leaf / Natural brass



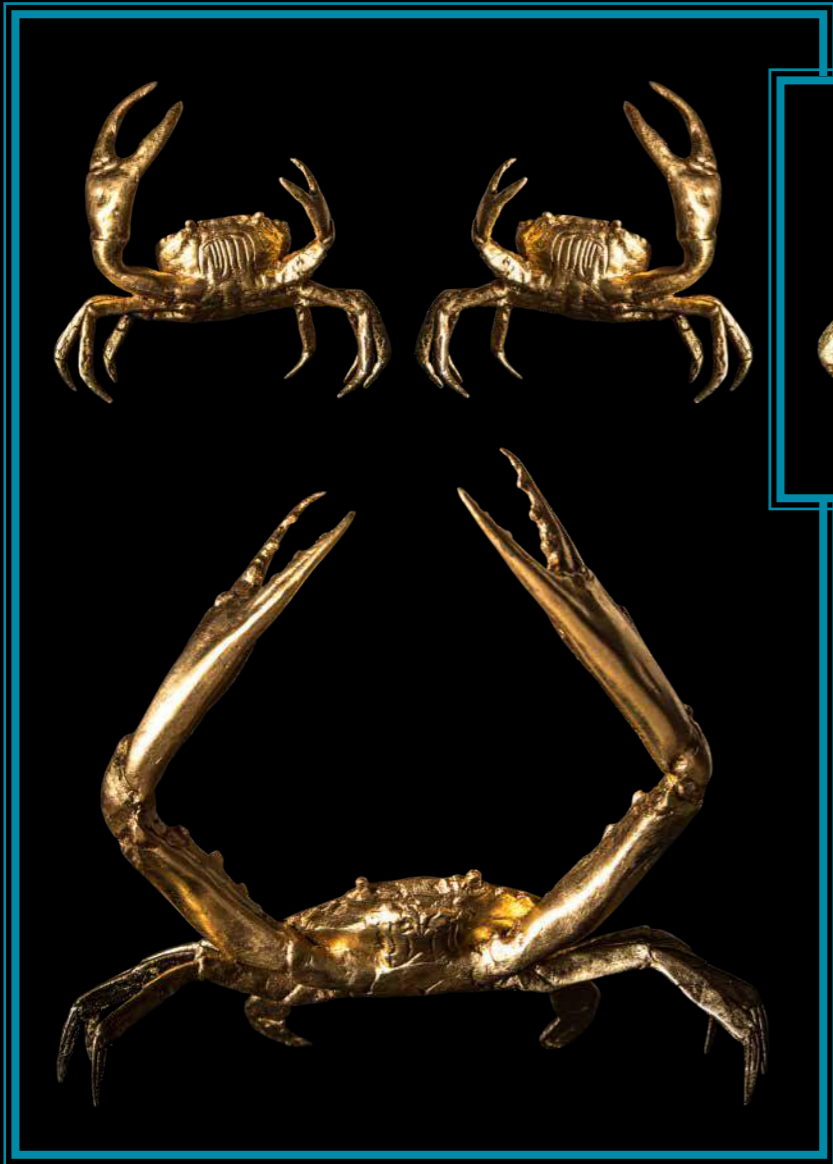
Lovely, graceful fish on a black marble base, for anyone seeking a little “côte d’azur chic”.



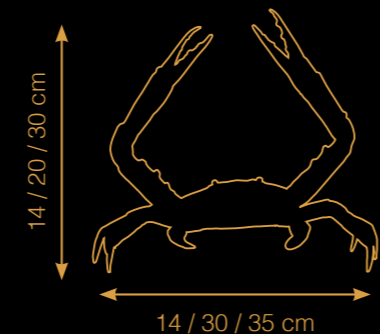
Itemnr: MM 2062 – MM 2063
MM 2177 – MM 2178
Model: Decoration “NEMO”

Material: Brass and marble
Finish: Gold leaf / Natural brass





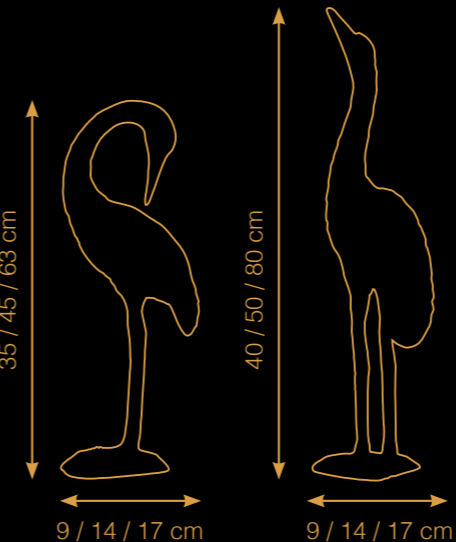
Brass sculpture in a lustrous golden finish, perfect for that beachy feeling. Particularly good-looking in your kitchen or near the pool.



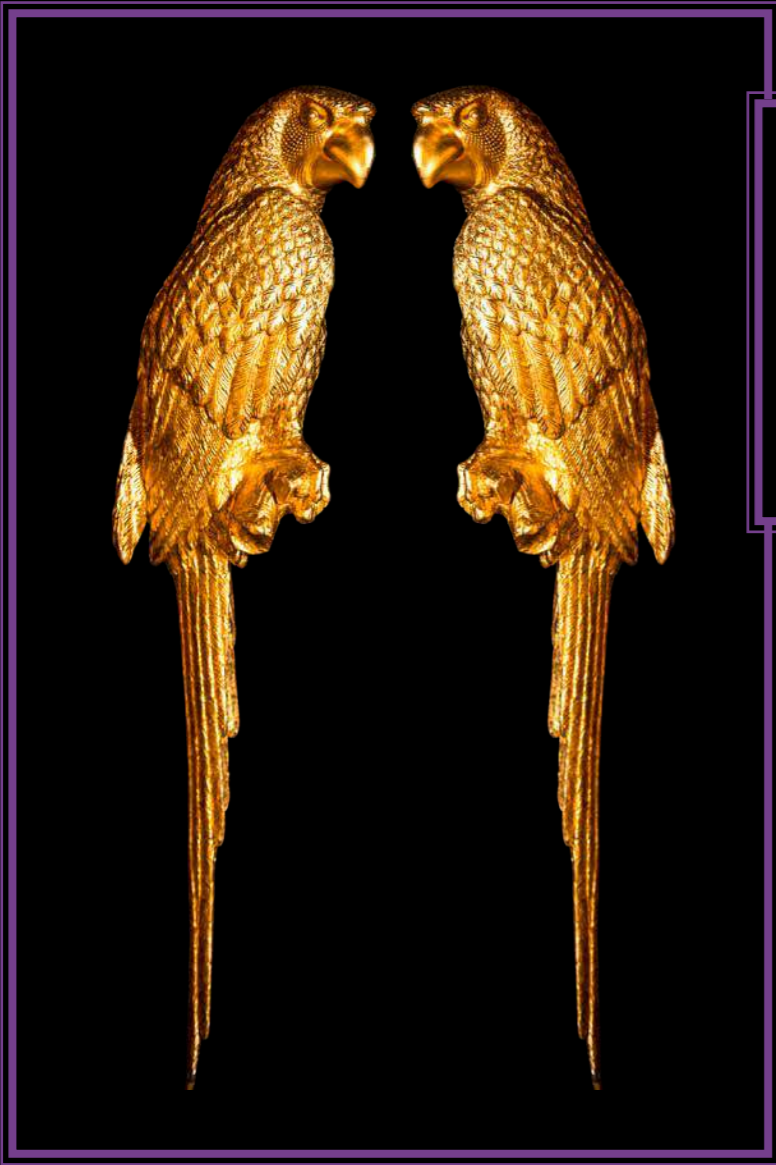
Itemnr: MM 2075 – MM 2076 – MM 2077
MM 2179 – MM 2180 – MM 2181
Model: Decoration “Mr. Crabs”
Material: Brass
Finish: Gold leaf
Natural brass



Amazing sculptures to fancy up your place. Completely made of brass, and coloured by hand in a gold leaf finish.



Itemnr: MM 2078 – MM 2079 – MM 2215
Model: Decoration “Cranes set”
Material: Brass
Finish: Gold leaf



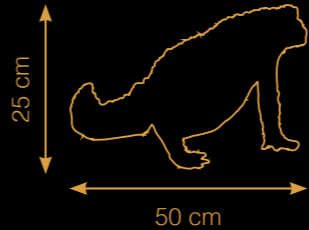
Martin found this (original antique) item during one of his predatory raids on the “Marché aux Puces” in Paris. Our craftsmen used this model to make a perfectly detailed replica. This wall decoration looks absolutely stunning on every wall!



Itemnr: MM 2173 – MM 2174
Model: Decoration “Perroquet Têtu” Finish: Gold leaf / purple
Material: Aluminium * other finishes on request



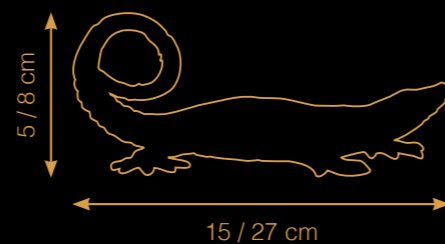
Put a smile on that face! The ugliest things in life can change into something beautiful. Now, the only thing left to do, is kiss.



Itemnr: MM 2093 Material: Brass
Model: Decoration “Grenouille deviant prince” Finish: Gold leaf



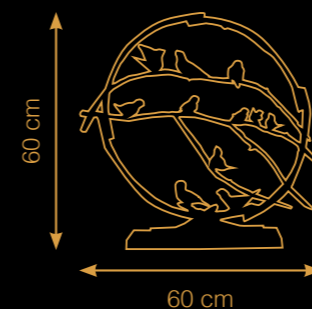
In the south of France these quick salamanders can be seen everywhere. Made in sand casted brass with or without golden skin. We enjoy them the most in pairs of three or four pieces.



Itemnr: MM 2114 – MM 2115
Model: Decoration "Malle Sander"
Material: Brass
Finish: Gold leaf



Birds on a twig in sand casted brass. This piece brings nature inside. Also lovely on your terrace or balcony.



Itemnr: MM 2110
Model: Decoration "Birdy Twig"
Material: Brass
Finish: Dark bronze with shiny brass birds



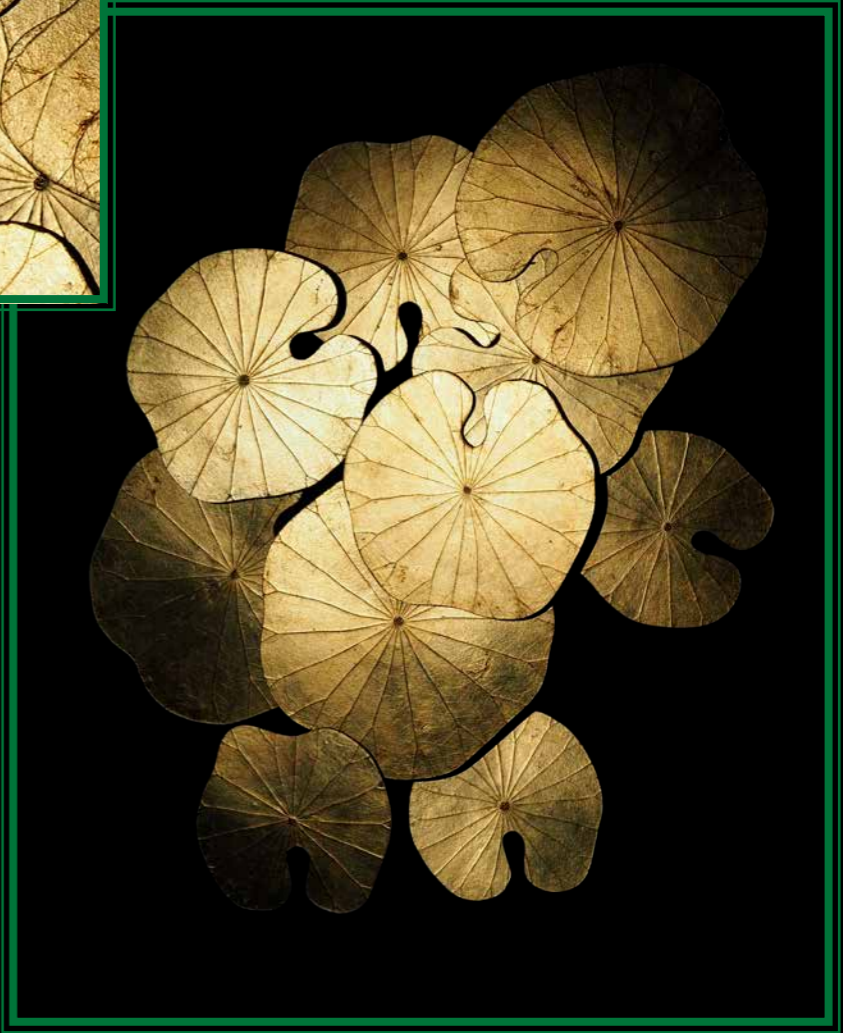
Itemnr: MM 2312
Model: Decoration "Golden leaf"
Material: Aluminium
Finish: Gold leaf



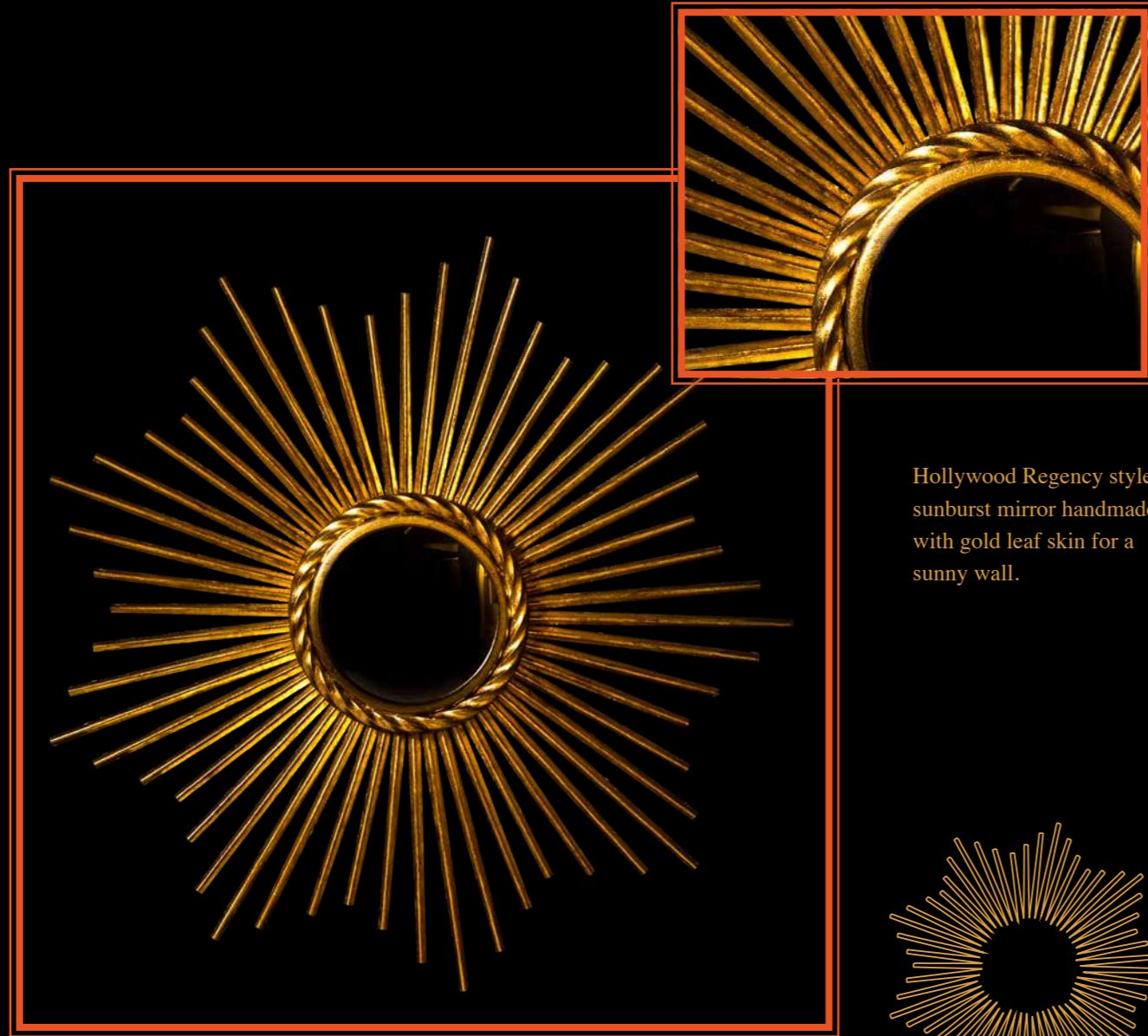
Itemnr: MM 2321
Model: Decoration "Golden Ginkgo"
Material: Aluminium
Finish: Gold leaf



This lotus wall decoration is handmade by craftsmen in Thailand. Made from real lotus leaves it adds a pleasant and comforting warmth to each interior!



Itemnr: MM 2142
Model: Decoration "Lotus Nymphaea 3D"
Material: Iron and wood
Finish: Gold leaf



Hollywood Regency style
sunburst mirror handmade
with gold leaf skin for a
sunny wall.



Ø60 cm / Ø100 cm

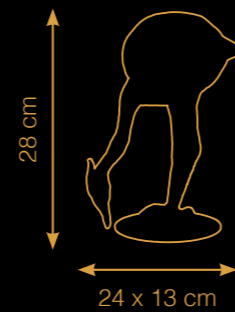
Itemnr: MM 2149 – MM 2150
Model: Mirror "Golden Glow"

Material: Iron and mirror glass
Finish: Gold leaf





Itemnr: MM 2322 - MM 2323
 Model: Decoration "Aquarius Crane"
 Material: Aluminium and glass
 Finish: Gold leaf with blue glass





EXCLUSIVE CUSHIONS

Create atmosphere and a luxurious feel with our exclusive line of cushions. Made and embroidered by hand, these decorative cushions are perfect to give your sofa a chic and colourful upgrade. Mix and match to your heart's content and do not shy away from fierce contrasts. Add your favourite colours or reinforce the colours in your interior by matching them with our cushions, have fun with it! Our throw pillows feel at home in any interior, they are perfect in an interior bursting with colour but will also boost a plain black sofa with a shot of happiness.

Marie Martin cushions are handmade with the most beautiful, colourful embroidery, silks and rich velvets for a cosy feel. Own designs embroidered with real metal thread, lovely marabout trimmings and a surprising back provide that luxurious appearance. A mix of motives, colours, leopard prints and classic forms give a vibrant and cheerful look. You will just keep looking at the gorgeous handwork and see a different detail every time! The ladies in our Indian atelier exercise a lot of patience and devotion to the making process. It usually takes 1 whole working day to make only 1 cushion. Their craftsmanship shows! We guarantee superb quality and use of first-grade materials. Each cushion is finished with a concealed zipper, a brand label and is supplied including a feather-filled inner pillow.

Our cushion collection is ever evolving. It is our mission to surprise you with every new creation. Visit boutique.marie-martin.com for an updated overview of our current selection.



CHAPTER ANTIQUE

Antique will always be our number 1 statement to go in our interiors. Without a few 'old' pieces a room or lobby will never be complete. We are always searching and collecting special pieces. For many years, we travel to France and Italy to find that one piece that meets all our requirements of taste and that makes us all in love with it. If you are interested in our selected items, please visit our website www.marie-martin.com.

If you are looking for a special item or you would like us to pimp your favourite antique pieces, do not hesitate to contact us. If you like us to choose a perfect piece to complement your room, we love to think along.

Antique has withstood the time, so it has to be beautiful.

CREATE YOUR OWN LAMP SHADE

Since 1964, all of our shades are being made by hand in our very own lamp shade studio. With tons of experience and the utmost attention to detail, our highly skilled women create unique shades that embody quality and craftsmanship.

Shades are made to order leaving the unique opportunity for customization. Not only the size of the shade, but also the fabric and trimming can be tailored according to your very own wishes. With our wide range of fabrics and decorative trimmings, we have all tools available to make the perfect shade for you.

Personally, we go absolutely mad for fringes, feathers and refined trimmings and believe these make everything prettier and undoubtedly more cheerful. Shade embellishment surely creates a complete new and rich look, showing a keen and personal eye for detail.

With our craftsmanship on the one and our creative originality on the other hand, we are your go-to address for one-of-a-kind lamp shades. We are always happy to think along to create the right look for you!



YOUR DREAMS COME TRUE...

In 2022, Marie Martin introduces something really spectacular:
a new collection "Haute Couture beds".

Our creativity and love for decorating and theatre come together in a
collection that exceeds the concept of bedding in every possible way.

These arty drawings are a small preview of what is about to come.
The canopy beds will be made with the finest materials, the most beautiful
fabrics, fringes, tassels and lots of unique details.
Antique coronas, lots of silk flowers and fully dressed up with cushions, bed
skirts and bedspreads: in these beds you'll sleep like a king/queen.

For any information on prices and delivery time, please do not hesitate to
contact us.

AUTOUR DE CARRÉ



A BOTANICAL DREAM



ORIENTAL DREAM





MARIE MARTIN

Lopikerweg Oost 126 | 3411 LZ Lopikerkapel | The Netherlands

T +31 (0)348 551340 | info@marie-martin.com | www.marie-martin.com | [mariemartin_gold](https://www.instagram.com/mariemartin_gold)

Graphic Design by A.Graphique | www.a-graphique.nl | Photography by Peter Baas | www.peterbaas.com

Unless otherwise indicated, all models, materials, images on these pages are copyrighted by Marie Martin.

All rights reserved. No part of these pages, models, either text or image may be used.